



European Museum of the Year Award

# THE CANDIDATES | 2015

38 years of EMYA and the Council of Europe  
Museum Prize: 1977-2015

European Museum of the Year Award  
**THE CANDIDATES | 2015**

## EMF Board of Trustees 2014/2015

---

■ **David Anderson, OBE**

Director, National Museums of Wales, United Kingdom

■ **Lila de Chaves**

President of Heritage and Museums, Greece

■ **Dr David Fleming, OBE**

Director, National Museums Liverpool, United Kingdom

■ **Mikhail Gnedovsky**

Director, Cultural Policy Institute, Russia

■ **Goranka Horjan (Chair)**

Museum counselor, Museums of Hrvatsko Zagorje, Croatia

■ **Anne-Catherine Robert-Hauglustaine**

Director General, International Council of Museums (ICOM), France  
Ex officio

■ **Wim de Vos**

Chair of the Judging Panel, Belgium

■ **Benedetta Tiana**

Principal, BT Museum Consultancy, United Kingdom

■ **Cristina Vannini**

Principal, Soluzionimuseali – ims, Italy

## EMYA 2015 Judging Panel

---

■ **Shirley Collier, United Kingdom**

Museum Consultant

■ **José Gameiro, Portugal**

Director, Museu de Portimão

■ **Jan Gerchow, Germany**

Director, Historisches Museum Frankfurt

■ **Sirje Helme, Estonia**

Director General, Art Museum of Estonia

■ **Željka Kolveshi, Croatia**

Museum Advisor and Deputy Director, Zagreb City Museum

■ **Jouetta van der Ploeg, Netherlands**

Director, Stadsmuseum Zoetermeer

■ **Laurella Rincon, France**

Curator, Ministry of Culture and Communication

■ **Michael Ryan, Republic of Ireland**

Archaeologist and Writer, Chair of ICOM Ireland

■ **Jette Sandahl, Denmark**

Director, Museum of Copenhagen, Denmark

■ **Jahangir Selimkhanov, Azerbaijan**

Director of Arts & Culture Programme, Open Society Institute

■ **Wim De Vos, Belgium (Chair)**

Counselor at the Belgian Federal Department of Science Policy

## National Correspondents

---

National Correspondents provide a network of information between museums throughout Europe. They welcome news of developments and activities that may be conveyed to a wider audience through the European Museum Forum.

### Albania

■ **Ilirjan Gjipali**

Head of Department of Prehistory  
Institute for Archaeology  
igjipali@gmail.com

### Armenia

■ **Marine Mkrtchyan**

ICOM Armenia Board Member  
Marishmuz85@yahoo.com

### Austria

■ **Wolfgang Meighörner**

Director of the Country Government Museum  
Tyrolean State Museums  
W.Meighoerner@tiroler-landesmuseen.at

### Azerbaijan

■ **Roya Taghiyeva**

Director of the Azerbaijani State Museum of Carpet  
and Applied Arts  
mail@azcarpetmuseum.az

### Belgium

■ **Leen Ochelen**

Director, Brussels Museums Council  
leen@brussel museums.be

■ **Sofie Wilder**

Director, Museums of Turnhout  
sofie.wilder@turnhout.be

### Bosnia and Herzegovina

■ **Alma Leka**

Secretary of ICOM Bosnia and Herzegovina  
lekaalma@hotmail.com

### Bulgaria

■ **Stavri Nikolov**

Founding Director Director Spaces Living Lab  
stavri.nikolov@digitalspaces.info

### Croatia

■ **Zvezdana Antos**

Senior Curator, Ethnographic Museum of Zagreb  
zantos@emz.hr

### Czech Republic

■ **Jana Souckova**

Czech Committee of the Blue Shield, Czech  
Committee for UNESCO  
jana.souckova@volny.cz

### Denmark

■ **Ida Brændholt Lundgaard**

Danish Agency for Culture  
idablu@kulturarv.dk

### Estonia

■ **Mariann Raisma**

Director, University of Tartu History Museum  
mariann.raisma@ut.ee

---

## Finland

### ■ Jari Harju

Curator, Helsinki City Museum  
Jari.Harju@hel.fi

## France

### ■ Étienne Féau

Project Officer, Department of European and International Affairs  
etienne.feau@culture.gouv.fr

## Georgia

### ■ Lana Karaia

ICOM Georgia  
lana.karaia@gmail.com

## Germany

### ■ Otto Lohr

Consultant, Bavarian State Office for the Museums  
Otto.Lohr@blfd.bayern.de

### ■ Jutta Engelhard

Deputy Director, Rautenstrauch-Joest-Museum, Köln  
jutta.engelhard@stadt-koeln.de

### ■ Antje Schmidt

Head of Digital Cataloguing, Museum für Kunst und Gewerbe, Hamburg  
antje.schmidt@mkg-hamburg.de

## Greece

### ■ Anna Vogli

Head of PR, S&B Industrial Minerals S.A., Athens  
a.vogli@sandb.com

### ■ Yiannis Markakis

Director, Cretan Open-Air Museum 'LYCHNOSTATIS', Hersonissos  
info@lychnostatis.gr

## Hungary

### ■ Zsuzsanna Batari

Curator, Open-air museum Szentendre  
batarizs@hotmail.com

## Republic of Ireland

### ■ Hugh Maguire

Director, The Hunt Museum  
director@huntmuseum.com

## Italy

### ■ Michele Trimarchi

Professor of Economic Analysis of Law, University of Catanzaro "Magna Graecia"  
Visiting Professor of Cultural Economics, University of Bologna "Alma Mater"  
michtrim@me.com

### ■ Marianella Pucci

ICOM Compania Regional Coordinator  
mpucci@mediateur.it

## Latvia

### ■ Ineta Zelča Šimansone

Chair of Latvian Museums Association, Latvian National Museum of Art  
Ineta.zelca@lnmm.lv

## Liechtenstein

### ■ Rainer Vollkommer

Director, Liechtenstein National Museum  
rainer.vollkommer@llm.llv.li

## Lithuania

### ■ Vaiva Lankeliene

Chair of ICOM Lithuania National Committee  
v.lankeliene@muziejus.lt

---

## Macedonia

### ■ Rubinco Belceski

Institution for Protection of Monuments of Culture and Museums  
rubin.belceski@yahoo.com

## Malta

### ■ Romina Delia

Secretary General, ICOM Malta  
romi\_delia@hotmail.com

## Republic of Moldova

### ■ Nicoleta Zagura

President of the Art and Heritage UNESCO Club  
culturaunesco@gmail.com

## Montenegro

### ■ Ljiljana Zeković

Director of the Art Museum of Montenegro  
mnl.zekovic@t-com.me

## The Netherlands

### ■ Adelheid Ponsioen

Consultant  
adelheid@ponsioenconsultancy.nl

### ■ Jan Hovers

Director Zaans Museum  
J.Hovers@zaansmuseum.nl

### ■ Linda Mol

Head of exhibitions and interpretation at the National Maritime Museum Amsterdam  
lmol@hetscheepvaartmuseum.nl

## Norway

### ■ Tron Wigeland Nilsen

Norges Museumsforbund, Oslo  
tw@n@ museumsforbundet.no

## Poland

### ■ Paulina Florjanowicz

Representative of the Director for International Relations  
National Institute of Museology and Collections Protection, Warszawa  
pflorjanowicz@nimoz.pl

## Portugal

### ■ João Neto

President Associação Portuguesa de Museologia (APOM) Portugal

### ■ Maria Jose Santos

Director of the Penafiel City Museum  
mj.santos@cm-penafiel.pt

## Romania

### ■ Nicoleta Zagura

President of the Art and Heritage UNESCO Club  
culturaunesco@gmail.com

## Russia

### ■ Vassily Pankratov

Director, Gatchina Royal Palace Estate  
vasyapank@mail.ru

### ■ Sofya Averchenkova

Institute for Cultural Policy  
sofya.averchenkova@gmail.com

---

## Serbia

### ■ Mila Popovic-Zivancevic

Director, Central Institute for Conservation, Belgrade  
m.popovic-zivancevic@cik.org.rs

## Slovenia

### ■ Marjeta Mikuz

National Museum of Slovenia, Office for Movable  
Cultural Heritage  
marjeta.mikuz@nms.si

## Spain

### ■ María San Sebastián

International Puppet Museum, Tolosa  
maria@cittolosa.com

### ■ Eloísa del Alisal

Museo CajaGRANADA Memoria de Andalucía  
Caja GRANADA Obra Social  
ealisal@memoriadeandalucia.es

## Sweden

### ■ Pernilla Klingofström

Museum Director at Norrtälje Museum  
pernilla.klingofstrom@norrtalje.se

## Switzerland

### ■ Susann Bosshard-Kälin

Cultural Journalist and PR-Consultant, Swiss  
Museum Association  
susann.bosshard@museums.ch

## Turkey

### ■ Lora Sariaslan

Independent Curator, Istanbul  
lora.sariaslan@gmail.com

### ■ Murat Ertuğrul Gülyaz

The Directorate of Nevşehir Museum  
mgulyaz@hotmail.com

## Ukraine

### ■ Kateryna Smaglyi

Director of the Kennan Institute, Kiev  
smaglyi@irf.kiev.ua / katyulka@hotmail.com

## United Kingdom

### ■ Rebecca Atkinson

Online Editor for the UK Museums Association  
London  
rebecca.atkinson@museumsassociation.org

### ■ May Redfern

Museum Consultant at Barnsley Museum Service  
North of England  
may.redfern@me.com

### ■ Rowan Julie Brown

Director, National Mining Museum Scotland  
rowanb@blueyonder.co.uk

### EMF Office

Rue Palestro 22  
Paris, France

### Françoise McClafferty

EMF Trust Secretary  
NML, Liverpool, United Kingdom

Administrator in 2014

### Matthew Guichard

ICOM, Paris, France

## SENSIBILITY AND SENSITIVITY IN MUSEUMS TODAY

---

Fast paced change in today's world allows public institutions no time to hesitate: they must – responsively and efficiently – find ways to cope with social and environmental shifts. Museums in particular look for new solutions to reach and engage constantly changing communities. Even community concepts alter – yet museums are expected to offer relevant cultural and learning experiences to their audiences. *The question becomes: how can we achieve a well-balanced offer of shared meaning-making activity with our audiences? What role do collaboration, cooperation and even co-creation have – and what role might they have?* In a competitive cultural environment, it is not easy to offer high-quality, public oriented programmes that are compatible with the museum's vision and mission and firmly rooted within the museum's collection care services and available resources. Nonetheless, museums have one huge advantage compared to other heritage institutions. The aura of original objects, which testify to the museum's history, along with the design process, which shapes new creative spaces and supports active use of those objects, greatly enhance visitors' positive mood, inspiring experiences of higher cultural engagement.

Museums are definitely giving their audiences a more prominent voice: they offer them opportunities for engagement in an exciting pursuit of knowledge, new experiences and

skills development. Recent research on the human adaptive capacity to interpret subjective well-being across a person's life span showed that adult individuals of all ages generally think their present self is the person they will remain for the rest of their lives: they demonstrate a misconception about future change. This may also be the reason why reflecting on accomplishments from the past creates deeper satisfaction than considering future perspectives. Museums can challenge these attitudes by offering a platform for change. Inspired by museums, people may find new ways of seeing things, rejuvenating their approach to creativity and innovation. And society is in need of positive outlooks and optimistic attitudes for a better future.

New trends and new perspectives shape the museum scene. They lead museums to become key drivers in the modern culture of innovation. Dramaturgy of display, striking architecture, breath-taking masterpieces, and interactive learning spaces can bring new confidence to people. Interpretation, meaning, learning styles and social responsibility are some of the often-mentioned landmarks on the path of experiences that museums want to create for their users. Current audiences are getting more demanding and expect museums to offer them capacity building that can make a difference to their present-day world. They



expect a place where to express themselves in inspirational and creative ways through participatory activities. They expect hands-on and team-building programmes and a possibility to choose among diverse options; they welcome social inclusion and current affairs on the museum's programming agenda.

To achieve these ends museums cannot – and should not – work alone. They build partnerships and networks. The European Museum Forum (EMF) is committed to assisting them. As a leading stakeholder promoting high museum standards throughout Europe, EMF is dedicated to fostering exchange of best practices in the museum field. It operates under the auspices of the Council of Europe and every year has an opportunity to address the decision makers in the Parliamentary Assembly in charge of culture with relevant topics and current issues. The European Museum of the Year Award (EMYA) competition is a protected brand which has been run by the European Museum Forum for almost forty years and is recognised all over 47 countries of Europe. In the EMYA scheme two annual awards have the most remarkable reputation: the European Museum of the Year Award and the Council of Europe Museum Prize. Since 1977 the European Museum Forum has been recognising and promoting the most distinctive qualities of museums: the sensibility to feel the pulse of their audiences and the sensitivity to find solutions to their needs. EMF's track record in identifying museums that do this at the highest level speaks for itself.

Today museum professionals are joining their strengths to offer new opportunities for communities that both seek increased

participation in the cultural and heritage sector and expect services of the highest quality. In 2014, in its pursuit of public quality in museums, EMF has improved and expanded its professional networks. Partnership with the International Council of Museums (ICOM) enabled greater participation of ICOM members in the panels and projects organised by EMF, while the members of the EMF network continued in the activities related to the promotion of the Lisbon Declaration. This document, drafted by ICOM Europe, addresses European governments asking them to secure adequate support for museums in times of crisis. Museums are key assets of Europe and provide a guarantee for future development – they cannot be seen as expense item, first in line for budget cutbacks. The pursuit for public quality has led museums to activate new programmes for special audiences including people with dementia, the homeless and those suffering from various physical and learning disabilities. A rich range of activities that may offer new perspectives to the code of ethics, which is one of ICOM's main concerns. EMF has proved its worth with contributions in this field, and will continue to support engagement with more vulnerable sectors of the community.

In 2014 a new partnership was stipulated between the European Museum Forum and the Network of European Museum Organisations (NEMO) whose mission is to ensure museums are an integral part of European society by promoting their work and value to policy-makers, and by providing museums with information and opportunities for networking and cooperation. Both organisations recognise common goals and areas of interest in the field of museums and

heritage, and decided to develop a permanent form of cooperation, particularly in disseminating each other's activities and looking for opportunities for joint project work. Active participation in the main events of both organisations is envisaged and has already started at NEMO's annual meeting in Bologna. The next joint meeting is scheduled at EMYA 2015 in Glasgow.

This year, EMF continued its role in the European Heritage Alliance led by Europa Nostra – we have been active in addressing the authorities in Europe, fighting for recognition of the prominent role of museums and heritage, as a fundamental and distinctive resource in Europe. Heritage is core to achieving smart, sustainable and inclusive growth in Europe. EMF followed EC public consultation on the Europe 2020 Strategy and sent its contribution in October 2014. We see museums and the cultural sector as a whole both as an important asset with intrinsic value and a vehicle for significant lifestyle changes and progress. The heritage sector offers opportunities for job creation, provides innovative ways for social engagement, and develops inter-generational and inter-cultural dialogue. EMF particularly recognises the value of public engagement in museums and fosters the exchange of best practice and ideas across Europe. We offer assistance to different organisations and institutions: this last year, a working cooperation was established with the House of European History project that opens its new displays in Brussels in 2016.

Together with six consortium partners, EMF participates as a partner in eCultValue, the EU funded project which explores new ways of accessing cultural heritage in real and virtual environments by using new

technologies. We organised three eCult-Value Dialogue Days and two workshops, which attracted about 300 participants from different European countries and offered a new strand especially attractive to younger museum professionals. Many of them joined the eCult observatory platform created by the project with the aim to continue the activities even after the official end of EU funding in 2015. The project also shaped new lines of debate and follow-up activities relating to future staffing in museums and professional development opportunities connected to new technologies take-up.

The core event of the European Museum Forum, the annual EMYA competition, summarises all these recent trends. In a complex, three round judging process, the EMF experts attempt to detect how museums express new forms of social sensibility. The Judging Panel tries to ascertain year on year improvements that edge museums one step closer to public excellence. Inventorying what is "out" and what is "in" in terms of innovation, relevance and quality – this is really a challenging task for the panel. *How can we measure to what extent the public is involved and the quality of their participation?* Some may think that in smaller museums this is an easier task since all activities create an immediate impact and the "feel good" outcome is more directly perceived. This immediate effect does in fact fuel the energy of museum staff and volunteers and gives them an opportunity to experience growth, on the spot, together with their audiences. On the other hand, opening a larger museum is a long-lasting and expensive investment which places a lot of responsibility on the museum as a whole. Implementing a large scale project is a great achievement that

shows the ability of a committed team to pull all the stops out with the same ambition: to turn their museum into a success story. The candidates taking part in EMYA 2015 come in different shapes and sizes: each presents a different form of vitality and each has a unique story to tell. The EMYA annual event is the right place to be, to be in direct contact with professionals on the cutting edge of the sector, who share new solutions and new possibilities. Their accomplishments are meant to inspire us all, stir up new emotions and create a new vision for the future.

Every year, the EMYA Judges have a difficult task ahead of them: they need to explore the candidate museums' accomplishments and spot what is the unique quality each offers. They evaluate how each museum captures the public imagination, and how successful it was in setting forward provocative topics. A success story is a dynamic concept. Sometimes how much additional information museums have provided with their applications is a decisive factor in demonstrating their relevance or the impact they have had on informal learning. Assessing public quality may mean considering how skilful a particular museum has been in meeting visitor requirements, or exceeding them – or simply understanding why and in what way they inspire people.

EMF works under the auspices of the Council of Europe and the great benefit is to be able to have in-depth understanding of a number of documents issued by the Council that have had knock-on effects on the cultural sector. One such document is the Framework Convention on the Value of Cultural Heritage for Society. Cooperation with the Council of Europe enabled the

EMF pool of experts to work with highly professional and motivated people who in turn participate in the EMYA process through the year. Meetings and discussions with Lady Diana Eccles, Rapporteur on Museums and Libraries for the Parliamentary Assembly, and Vesna Marjanović, Vice Chair of the Committee on Culture, Science, Education and Media of the Parliamentary Assembly this year resulted in new qualitative approaches. Professional support provided by Roberto Fasino and the invaluable assistance of Dana Karanjac from the Secretariat of Committee on Culture, Science, Education and Media enabled EMF this year to add value to our core activities.

Every year the call for the European Museum of the Year Award and the Council of Europe Museum Prize is announced in all 47 member states of the Council of Europe. Museums eligible to enter the competitions are those that have recently opened or significantly redeveloped their existing premises. The international Panel of Judges, appointed by the EMF Board of Trustees, carries out the assessment of candidates based on a multi-phased judging process. The EMYA Judging Panel is composed of the most experienced and knowledgeable professionals reflecting a balanced diversity of age, gender, background and geographical distribution. All candidate applicants for EMYA 2015 were visited by a judge, and following a detailed evaluation process the Judges determine – as a body – which museums should be nominated, for which award. An additional, anonymous, visit by a second judge may then take place to particular museums to further investigate nomination for a prize. The Judges then meet for the final panel meeting – in Paris in November last year – where they

determine the final winners. This year the judges nominated 42 museums to compete for the awards. The candidates will introduce themselves to delegates at the EMYA 2015 event, which takes place in Glasgow from 13th to 16th May 2015. The event is organised in cooperation with the Riverside Museum, Scotland's Museum of Transport and Travel, winner of EMYA 2013. Glasgow Life Glasgow Museums plans a multiveneue conference, ceremony and celebration that will provide an excellent insight into current museum practice in Scotland.

The annual call for the EMYA competition publishes clear criteria for each award.

**The European Museum of the Year Award (EMYA)** goes to a museum which contributes most directly to attracting audiences and satisfying its visitors with unique atmosphere, imaginative interpretation and presentation, and a creative approach to education and social responsibility. The overall quality and performance of the winning museum are assessed.

**The Council of Europe Museum Prize** is a unique award which goes to a museum highlighting the respect for human rights and democracy and the need to preserve and promote European cultural heritage as a factor uniting the Council of Europe's 47 member states. This prize is awarded by the Parliamentary Assembly of the Council of Europe, on the recommendation of the EMYA Judging Panel.

**The Kenneth Hudson Award**, an award in honour of the founder of EMYA, Kenneth Hudson, is awarded by the EMF Board of Trustees. His revolutionary approach brought museums closer to their audiences: the well-known motto he used to

describe public quality in museums is "museums with charms and chairs". This Award goes to a museum, person, project or a group of people who have demonstrated the most unusual, daring and, perhaps, controversial achievement in challenging common perceptions of the role of museums in society.

**The Silletto Prize** goes to a museum which has demonstrated excellence in involving its local community in planning and developing the museum, or has attracted outstanding support by involving volunteers in its work. This Award is generously sponsored by the Silletto Foundation.

Several **Special Commendations** are given to museums that demonstrate a particularly innovative aspect of their public service and from which other European museums can learn.

Since 2014 one special commendation for sustainability has been sponsored by the Meyvaert company.

The winners of EMYA 2015 are announced at the Award Ceremony in Glasgow on 16th May. The concluding ceremony, along with the conference, is a unique opportunity for museum professionals to exchange experiences and professional insights with top quality experts, in a relaxed, festive atmosphere. The whole event in Glasgow will be accompanied by the Festival of Museums which throws open the doors of the city's museum and institutions late into the night, providing an opportunity for delegates and audiences to meet. The rich programme offers workshops, panels, interviews with candidates and many other additional activities.

Once again, I would like to use the opportunity and express my gratitude to all EMF's hard-working colleagues who engaged their time and expertise to perform tasks for the European Museum Forum. The EMYA scheme is run completely on a voluntary basis: the EMF Board of Trustees, Members of the EMYA 2013 Judging Panel, the Trust Secretary and the whole EMF network of National Correspondents join efforts to create a remarkable celebration for museums. I would also like to thank candidate museums – from this year and the past 37 years. Without their excellence there cannot be any competition. Many thanks to our partners and supporters, Silletto Trust, Meyvaert, Event Communications and all other sponsors for supporting the EMF network.

Please save the dates and join us in Glasgow for EMYA 2015!

■ **Goranka Horjan**  
EMF Chair

# The European Museum Forum would like to thank all the individuals and organisations that have supported the work of EMF throughout the year

---

## Assistance with visiting the museum candidates

### Germany

- German Museums Association

### Netherlands

- Netherlands Ministry of Education, Culture and Science

### Norway

- Norwegian Museums Association

### Switzerland

- Swiss Museums Association
- Swiss Museums Passport

## Award Sponsor

- Silletto Foundation, Isle of Man

## Special Commendation Sustainability Corporate Sponsor

- Meyvaert Glass Engineering, Belgium

## Travel Bursary Scheme Corporate Sponsor

- Event Communications, UK

## Editors

- Special thanks to Benedetta Tiana, EMF Trustee for the editorial overview of the Candidates' and Winners' Brochures; to the editors of the Candidates' Brochure: EMF UK National Correspondents Rebecca Atkinson, Rowan Brown and May Redfern, and to Shirley Collier, EMYA Judge, as editor in chief of the Winners' Brochure.



European Museum of the Year Award  
**THE CANDIDATES | 2015**



# AUSTRIA

## Galtür

### Alpinarium Galtür Documentation Centre

---

The Alpinarium Galtür Documentation Centre was conceived as a response to an avalanche tragedy in 1999, which destroyed part of the village of Galtür. One element of the 19 metre high and 345 metre long avalanche safety wall which was re-built after the event, is the Alpinarium. Its aim is to trace the developments of mountain life in the Alps using exhibitions, talks and an active programme of events. The semi-permanent exhibition called *At The Top* presents stories of people who come from Galtür, lived here, moved away or set out from Galtür to explore the world – like

the local mountain guide who took part in two expeditions to the Caucasus at the start of the 20th century, or the well loved school teacher Anna Kathrein who shaped generations of local children. The centre focuses on understanding life in the high alpine regions, exploring Galtür, its surroundings, its history and the relationship between humans and natural environment. Visitors are constantly amazed that a small mountain village has given life to a sustainable, successful cultural enterprise that attracts visitors to the area.



#### Information

**Alpinarium Galtür Documentation GmbH**

Director: Mayor Anton Mattle

Address: Hauptstraße 29c, 6563 Galtür, Austria

Telephone: +43 544 320 000

Email: [info@alpinarium.at](mailto:info@alpinarium.at)

Website: [www.alpinarium.at](http://www.alpinarium.at)

# AUSTRIA

## Vorarlberg

### Vorarlberg Museum

---

Located close to the shore of Lake Constance in Austria, the Vorarlberg Museum aims to inspire a passion for the federal state of Vorarlberg's cultural heritage, its people and its stories.

Founded in 1857 to collect and preserve Vorarlberg's art and cultural material, the museum closed in 2009. The original 100 year-old building was demolished and a new extension designed to incorporate the neighbouring former district administrative centre.

Although size was a problem in the past, the new museum building provides a tranquil setting for a broad collection

that encompasses traditional areas such as archaeology, art and folklore, as well as emerging cultural themes from the textile industry to migration. In the future, the museum plans to collect intangible heritage. Its displays, exhibitions and events programme challenge pre-conceived ideas about Vorarlberg, its history, identity and communities.

The surprising and beautifully-displayed collections sit alongside the Museum's partnerships: it is currently working on about 40 partnership projects in the region.



#### Information

##### **Vorarlberg museum**

Director: Andreas Rudigier

Address: Kornmarktplatz 1, 6900 Bregenz, Vorarlberg, Austria

Telephone: +43 5574 460 50

Email: [info@vorarlbergmuseum.at](mailto:info@vorarlbergmuseum.at)

Website: [www.vorarlbergmuseum.at](http://www.vorarlbergmuseum.at)

# AZERBAIJAN

Baku

## Maiden Tower

---

The Maiden Tower is located in the architectural and historical complex of Icherisheher, the ancient walled city of Baku in Azerbaijan, which has been a UNESCO World Heritage Site since 2000. The tower has been a publicly accessible museum since 1964 and is a major tourist attraction, but following an earthquake it was placed on the list of heritage in danger. The State Historical-Architectural Reserve, which manages the museum on behalf of the government, developed a conservation plan to redesign the interiors and reconceptualise displays and interpretation. The result is a more accessible building,

with handrails, discreet lighting and a transparent fence around the panoramic space on the top of the tower.

Audiovisual installations showcasing archaeological and historical objects present different perspectives on their use, allowing visitors to make up their own minds. An increase in visitor numbers, and a limited amount of space, means the museum is currently investigating inventive programmes, such as seasonal events, participatory performing arts events and regular light installations that explore how fires might have been used in the tower to signal military attack.



### Information

#### Qız Qalası

Director: Jeyhun Aghakishibayli

Address: Asaf Zeynalli kuchesi, 68, Icherisheher, Baku, Azerbaijan

Telephone: +994 (12) 437 15 41

Email: muzey.icherisheher@mail.ru

# BELGIUM

## Diksmuide

### Museum on the Yser

---

The recently renewed Museum on the Yser focuses on the Belgian-German military confrontation during the First World War and the complexities of Flemish nationalism. This museum is housed in the 84 metre high memorial tower in the form of a cross on the west bank of the River Yser at Diksmuide in Flanders. Twenty-two floors are accessible, with the space and its displays sharing a message of peace and tolerance as visitors enjoy unique views.

The tower was built in 1951, replacing a smaller cross from 1928 that was blown up in 1946, and the Museum opened in 1992 as

a memorial for emancipation and peace. The tower's new exhibition on nine floors *Wat rest van het Leven. Wat blijft van het land (What remains of the land. What remains of life)* opened in March 2014 and has received more than 100,000 visitors. The complex story told in this exhibition, and the central message of tolerance, has been sensitively handled by the museum, while awkward spaces are utilized as areas to display objects and for reflection.



#### Information

**Museum aan de IJzer**

Director: Dirk Demeurie

Address: IJzerdijk 49, 8600 Diksmuide, Belgium

Telephone: +32 51 500 286

Email: [info@aandeijzer.be](mailto:info@aandeijzer.be)

Website: [www.aandeijzer.be](http://www.aandeijzer.be)



## BELGIUM

### Antwerp

## Red Star Line Museum

---

Antwerp was a significant gateway for migrants travelling to America between the 1840s and the 1930s. The Red Star Line Museum, housed in the terminal departure buildings used to control those emigrating, explores themes of migration and memory from that time. Its recent restoration aims to preserve the historical complex as a heritage site as well as an accessible museum.

Many of the stories told have a strong resonance today: the Red Star Line passengers' quest for happiness and a new life is linked to the ongoing global phenomenon of human migration. Avoiding

nostalgia, the new museum uses the experiences of contemporary migrants and participatory displays to pose a central question: *what does the story of the Red Star Line passengers mean today?*

The Museum's restoration was a complex process: the building was saved from collapse and objects needed collecting from émigré families. By allowing visitors to explore and discuss the contemporary issue of migration in a historical context, the museum challenges preconceptions and offers a unique experience to a wide range of people.



### Information

**Red Star Line Museum**

Director: Luc Verheyen

Address: Montevideostraat 3, 2000 Antwerpen, Belgium

Telephone: + 32 3 298 27 70

Email: [redstarline@stad.antwerpen.be](mailto:redstarline@stad.antwerpen.be)

## CROATIA

Prvić Luka

### Faust Vrančić Memorial Centre

---

Born in Šibenik in 1551, Faust Vrančić was a scientist who cemented his name in the history books largely through the invention of Homo Volans, the flying man, who is depicted in his design for the world's first parachute. The Centre on this small island in the Adriatic celebrates Homo Volans and his other works, ranging from philosophical writings to poems and ideas for water and wind-powered mills – all reflecting the spirit of the Renaissance. Digital displays, models of his inventions and external open spaces present his ideas in an accessible and engaging way.

The Centre's main role is to preserve

and present artefacts related to the life and work of Vrančić, but it also works to inspire audiences today. It holds regular art workshops, performances and concerts, as well as lectures and exhibitions, which cultivate a love of invention, art and science among new generations.

The island is a popular tourist destination, and the Centre seeks to create a foundation for sustainable cultural tourism through the creation of new jobs, products and services as well as by conserving the local heritage for residents.



#### Information

**Memorijalni centar "Faust Vrančić"**

Director: Ivana Skočić

Address: Prvić Luka bb, 22233 Prvić Luka, island of Prvić, Croatia

Telephone: +385 22 448 128

Email: [voditeljica@mc-faustvrancic.com](mailto:voditeljica@mc-faustvrancic.com)

Website: [www.mc-faustvrancic.com](http://www.mc-faustvrancic.com)

# DENMARK

## Helsingør

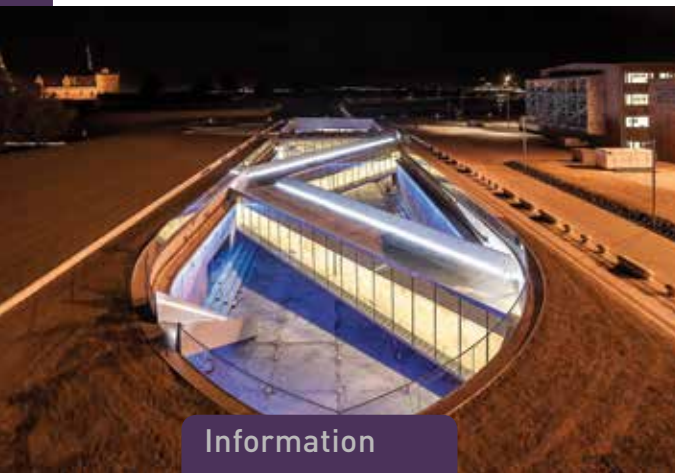
### M/S Danish Maritime Museum

Formally housed in the Kronborn Castle in Helsingør, the Danish Maritime Museum was forced to find a new home after the castle was awarded UNESCO World Heritage Status and restored to its original interiors. All was not lost, however: and the Museum was relocated and given a dramatic new building that wraps around a dry dock like a doughnut, with the central hole - the dry dock - now the centrepiece of the Museum's collection.

Helsingør was home to one of the most significant modern shipyards between 1882 and 1985, but after its closure the city

underwent a transformation from industrial to cultural centre. The Museum plays a key role in this, with its modern building giving the history of the shipyards a new lease of life.

The structure of the new museum building is integral to the visitor experience: a sloping zigzag bridge spans the entire dry dock, and represents a bridge between the old and the new for visitors as they explore Denmark's maritime history. All floors in the museum slope gently, creating a continual descent towards the water's edge.



#### Information

**M/S Museet for Søfart**

Director: Camilla Mordhorst

Address: Ny Kronborgvej 13000 Helsingør, Denmark

Telephone: +45 4921 0685

Email: [info@mfs.dk](mailto:info@mfs.dk)

Website: [www.mfs.dk](http://www.mfs.dk)

# FINLAND

## Forssa

### Forssa Museum

---

The small city of Forssa in Finland aims high with its Museum, which presents local history to residents. The Forssa Museum won Finnish Museum of the Year in 2014, much to the delight of its visitors, who regard the museum as belonging to them and something they can be proud of. The museum is located in a 19th-century spinning mill, which reflects the city's historical textile industry, and was renovated to better meet the needs of a contemporary museum. Only two people work full time at the museum, making all it has achieved all the more impressive. A well-organized

collection and a good collecting strategy allow the Museum to offer high-level educational programmes, international collaborations, and outreach work with old and disabled people. Partnerships with local institutions have helped to develop tourism and engage volunteers in the Museum's work. This museum serves its community, proving that even small institutions can punch above their weight when it comes to community engagement.



#### Information

**Forssan museo**

Director: Kati Kivimäki

Address: Wahreninkatu 18, 30100 Forssa, Finland

Telephone: +358 34141 5837

Website: [www.forssanmuseo.fi](http://www.forssanmuseo.fi)



# FINLAND

## Espoo

### The Finnish Nature Centre Haltia

---

Haltia is a new type of nature museum, which brings all of Finland's natural treasures and unique natural heritage under one roof. The Centre is surrounded by a park, putting visitors in the heart of nature itself, while its hardwood building is an architectural nod to natural materials.

The Museum's theoretical concept is the relationship between culture and nature in Finland, and how understanding and learning from nature provides the basis for social continuity in the Finnish world view. Energy-saving technological systems used in the building reinforce this relationship, and act

as a learning tool for visitors to appreciate the importance of nature, especially in connection to the survival of humanity as we know it.

As well as embracing its social role, the Finnish Nature Centre Haltia has taken a leading role in the Finnish museum sector. It is closely involved in the country's museum association and plays host to major sector conferences. Haltia is now a training centre for the network of 25 nature centres around the country, allowing staff to share knowledge and develop best practice.



#### Information

**Suomen luontokeskus Haltia**  
Director: Tom Selänniemi  
Address: Nuuksiontie 84, FI-02820 Espoo, Finland  
Telephone: +358 40 163 6200  
Email: [info@haltia.com](mailto:info@haltia.com)  
Website: [www.haltia.com](http://www.haltia.com)

# FRANCE

## Guise

### The Familistère at Guise

---

The Familistère at Guise, a little country town in northern France, is a museum dedicated to the story of the Familistère (a social palace, for 'families') and to social Utopias developed in the 19th century. The Museum is housed in the communal housing phalanstery (named after the ancient Greek basic military unit, the phalanx) founded by Jean-Baptiste André Godin, a manufacturer largely inspired by the Utopian socialist Joseph Fourier. The extraordinary building was designed to improve workers' living conditions, and also provided schools, a theatre, a swimming-pool, gardens and other shared facilities.

Today there are still people living and using the Familistère, and so the Museum has created a dialogue between the 1850s Utopian experiment and modern society. Guise is in a region with high unemployment, and the Museum invites visitors to explore and react to social debate as informed and active citizens. A permanent exhibition tells the history of the site, with activities and outreach bringing a wide range of people in. This unique Museum is both a heritage site and a truly living museum, putting it in an ideal position to redevelop the site according to its particular 'sense of place'.



#### Information

**Le Familistère de Guise**

Director: Frédéric Panni

Address: Le Familistère de Guise, F-02120 Guise, France

Telephone: +33 3 23 05 85 90

Email: [accueil@familistere.com](mailto:accueil@familistere.com)

Website: [www.familistere.com](http://www.familistere.com)

# FRANCE

## Marseille

### Museum of European and Mediterranean Civilisations

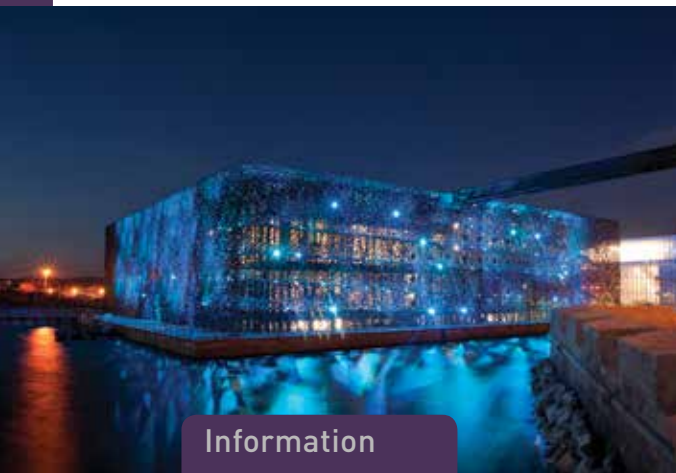
---

One of the major trading places of the ancient world, and strategic Mediterranean port, Marseille, the second largest city in France, has always played a significant role as a gateway into France and a cosmopolitan, vibrant and cultural melting pot. As European Capital of Culture in 2013, the city grasped the opportunity to celebrate its European and Mediterranean social and historical roots.

Part of these celebrations included the opening of the national Museum of European and Mediterranean Civilisations. The Museum faces the sea and reflects the great story of migration into the city as well

as France as a whole. Its collections have a complex story to tell, especially in modern-day France, but this has been achieved by creating a space of openness and sharing, where common and uncommon pasts are explored, understood and appreciated as history that becomes contemporary and relevant to today. The design of the building creates an integrated overview of the cultures of the Mediterranean. As well as being the first museum exclusively dedicated to the cultures of the Mediterranean, it is also an outstanding public space and landmark for the city and the region.

26



#### Information

**MUCEM: Musée des civilisations de l'Europe de la Méditerranée**

Director: Jean-François Chougnat

Address: Esplanade du J4 7, promenade Robert Laffont, CS 10351, 13213 Marseille Cedex 02, France

Telephone: +33 4 84 35 13 13

Email: [contacts@mucesm.org](mailto:contacts@mucesm.org)

Website: [www.mucesm.org](http://www.mucesm.org)

# FRANCE

## Montluçon

### MuPop: Museum of Pop Music

---

The only museum devoted to the history of popular music in France, MuPop showcases the largest collection of popular musical instruments in the country dating from the late 18th century to the present day. The city began assembling the collection in 1959, and since opening in 2013 the Museum showcases objects and celebrates the powerful link between people and music over the past 150 years.

Visitors to the Museum undertake an interactive journey into recent musical history, through two exhibitions: the musical exhibition and the instrumental exhibition. Music is at the heart of the experience,

with mobile listening systems with audio headphones available alongside associated posters, photographs, record sleeves and instruments.

Access is important to MuPop, with the site fully accessible for people with disabilities and plans to introduce audio-descriptions to the mobile audio system. There is a special programme in place for school groups and the permanent and temporary exhibitions are complemented by a monthly series of activities, from lectures to theme-based tours, and concerts to musical film screenings.



#### Information

**Mupop: Musée des Musiques Populaires de l'Agglomération Montluçonnaise**

Director: Eric Bourgougnon

Address: 3, rue Notre-Dame, 03100 Montluçon, France

Telephone: +33 4 70 02 19 60

Email: [contact@mupop.fr](mailto:contact@mupop.fr)

Website: [www.mupop.fr](http://www.mupop.fr)



## GERMANY

### Wittelshofen

## LIMESEUM at Ruffenhofen Roman Park

---

The LIMESEUM, an archaeological museum which borders an ancient Roman Park, opened in October 2012. The remains of a Roman military fort and adjoining civilian settlement are still hidden underneath the surface of the park. It was listed as a UNESCO World Heritage site in 2005. The Museum is dedicated to preserving and presenting the Roman site: it interprets Roman life in Ruffenhofen for visitors whilst also providing a programme of events and activities that connect visitors with the historic events that took place on the site.

Before the LIMESEUM was built, there was just a small Roman Park Museum in Weiltingen, with around 2,000 visitors annually. In 2013 the LIMESEUM welcomed 29,654 visitors.

Committed volunteers make the Museum's activities happen, for example open air cinema evenings and projects with a local kindergarten. The Museum is dedicated to the active involvement of local communities and to offering educational and recreational experiences to all visitors.



### Information

#### LIMESEUM und Römerpark Ruffenhofen

Director : Dr. Matthias Pausch

Address: Limeuseum, Römerpark Ruffenhofen 1, 91749, Wittelshofen, Germany

Telephone: +49 (0) 9854 / 97 99 242

Email: [info@roemerpark-ruffenhofen.de](mailto:info@roemerpark-ruffenhofen.de)

Website: [www.limeseum.de](http://www.limeseum.de)



## GERMANY

### Munich

## State Museum of Egyptian Art

---

Situated in the Kunstareal, the Egyptian Museum provides a unique bridge between antiquity and contemporary art, where Egyptian art can be compared to that of other cultures and times.

Almost invisible from outside, the architectural design of the new Museum stresses the impact of ancient Egyptian art. Inside the galleries displays, lighting and graphics including labels are all designed around the needs of the visitor. Information on the collections can be accessed through digitised media although this is kept

separate from the original works of art. The average dwell time for visitors inside the Museum is two hours or more. The dedicated staff are part of just a small team, despite the impressive size of the museum and its collection, testifying to what can be achieved through a strong vision, good organisational structure and exacting financial planning.



### Information

**Staatliches Museum Ägyptischer Kunst München**

Director: Dr. Sylvia Schoske

Address: Gabelsbergerstraße 35, 80333 München, Germany

Telephone: +49 89 28 92 76 30

Email: [info@smaek.de](mailto:info@smaek.de)

Website: [www.smaek.de](http://www.smaek.de)

## GERMANY

### Kaufbeuren

## Museum of Local History

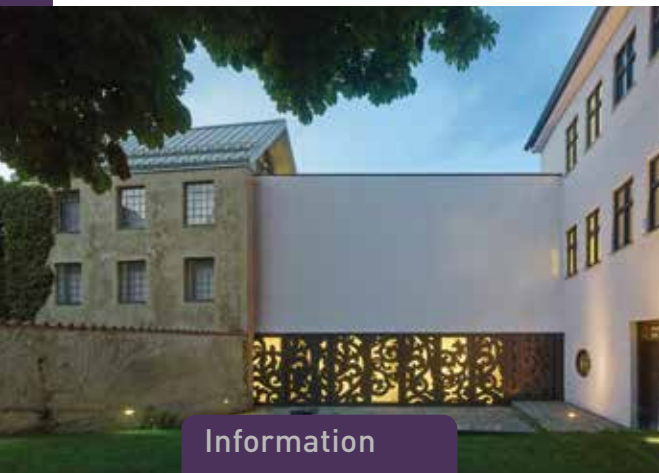
Kaufbeuren's Stadtmuseum re-opened in June 2013 after more than ten years of closure. Since 1901 the Museum was located in a listed former patrician house dating from 1746 in the centre of the Old Town. In 2002 structural damage led to the building being gutted and a modern extension was then added. The Museum received the Bavarian Museum Prize in 2013.

Situated in a small town with around 20,000 inhabitants, the Museum is dedicated to Kaufbeuren's rich heritage. Its goal is to promote understanding of historical contexts and develop local citizens' sense of

identity through modern, well thought-out displays, aimed at children, teens and older visitors along with those with disabilities; a wide range of hands-on programmes delivered by qualified museum guides; and partnership working.

It acts as a strong anchor in the local community. The Friends of the Stadtmuseum was founded on International Museum Day in 2003 and now has more than 370 members. During the past 10 years the organisation has collected more than €600,000 to support the work of the Stadtmuseum.

30



### Information

**Stadtmuseum Kaufbeuren**

Director: Petra Weber M.A.

Address: Stadtmuseum Kaufbeuren Kaisergäßchen 12-14 87600 Kaufbeuren, Germany

Telephone: +49 8341 966 83 90

Email: stadtmuseum@kaufbeuren.de

Website: www.stadtmuseum-kaufbeuren.de

## GERMANY

### Berlin

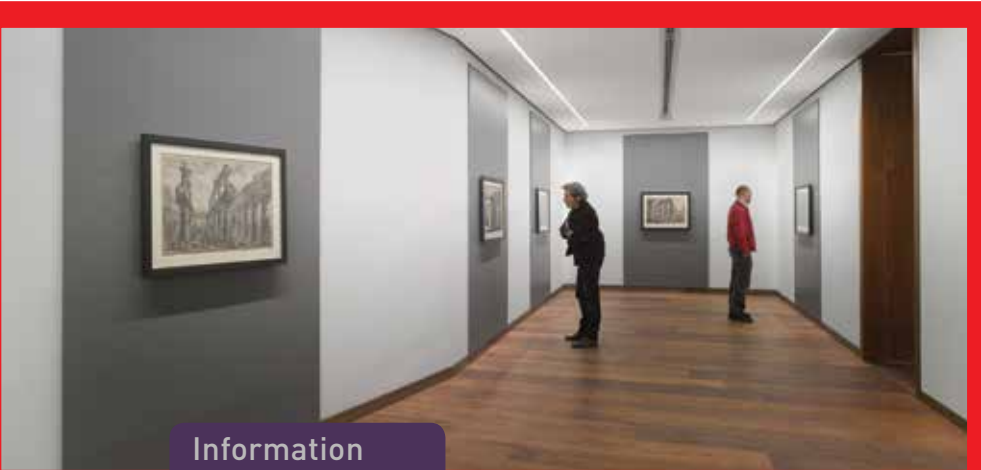
# Tchoban Foundation: Museum for Architectural Drawing

---

The Museum for Architectural Drawing is a private non-profit institution, built and owned by the Tchoban Foundation. Sergei Tchoban, a passionate draftsman and a collector of historic architectural drawings, created the Foundation in 2009.

The Museum, housed in a building with a striking cubic shaped facade with concrete reliefs, is surrounded by other galleries, studios and the Aedes architecture forum. It owns a small but growing collection and is visited mainly by specialists, students and artists, with the overall number of visitors growing year on year.

The Museum promotes classical training in draftsmanship among young architects and presents architectural drawings to the wider public via exhibitions and events. A programme of exhibitions with an international network of collectors and collections of other architectural drawings is planned, with venues such as Sir John Soane's Museum in London, the Tretyakov Gallery in Moscow, the State Hermitage in Saint Petersburg and the École Nationale Supérieure des Beaux Arts in Paris.



### Information

**Tchoban Foundation. Museum für Architekturzeichnung**

Director: Nadejda Bartels

Address: Christinenstraße 18a, 10119 Berlin, Germany

Telephone: +49 30 43739090

Email: [mail@tchoban-foundation.de](mailto:mail@tchoban-foundation.de)

Website: [www.tchoban-foundation.de](http://www.tchoban-foundation.de)



## GERMANY

### Cuxhaven

## Wind Force 10: Shipwreck and Fisheries Museum

---

Two 1930s fish-packing halls and a modern exhibition space shape a powerful museum that takes visitors into the challenging and dramatic world of seafaring. The new “Wind Force 10” Shipwreck and Fisheries Museum combines the collections of two previous smaller museums into two related themes around the dangers and challenges of seafaring, ship wrecks and deep sea fishing. These unusual subjects are handled by linking the town’s long history of fishing to contemporary issues, for example by exploring the problems caused by overfishing and emphasizing the need for sustainable fishing methods.

These stories are deeply intertwined with and embedded within the history of Cuxhaven, which sits where the river Elbe meets the North Sea. The new Museum celebrates the men and women who worked in northern waters as well as those who have been closely involved in or affected by ship wrecks. Visitors learn that the sea provides but can also take away, a powerful lesson – especially for younger audiences.



### Information

**“Windstärke 10” Wrack- und Fischereimuseum Cuxhaven**

Director: Dr. Jenny Sarrazin

Address: Ohlroggestr. 1, 27472 Cuxhaven, Germany

Telephone: +49 4721 590710

Email: [windstaerke10@cuxhaven.de](mailto:windstaerke10@cuxhaven.de)

Website: [www.windstaerke10.net](http://www.windstaerke10.net)

# GREECE

## Athens

### Byzantine and Christian Museum

---

The Byzantine and Christian Museum is a state museum of art and archaeology, established in 1914. It was the first national museum devoted to Byzantium.

The redevelopment project focused on the renovation and re-use of historical buildings in the heart of Athens – the Museum is situated on an avenue linked with a row of famous museums and embassies. Today, the Byzantine and Christian Museum complex consists of the Villa Ilissia, the main building of the complex since 1926, and two single-storey wings flanking the courtyard and the adjacent cultural park. The former outhouses (new wings of the building) were

converted during the redevelopment.

The Museum interprets the Byzantine civilization, through displays of rare collections of pictures, sculptures and manuscripts dating from the 3rd century AD to the late medieval era. The Byzantine period is an extremely long period of great importance in Greek history and constitutes the heritage upon which the identity of modern Greece is founded.

In 2014 the Museum celebrated its centenary, after completing all its building infrastructure for research and study, exhibitions and general visitor services.



#### Information

**Βυζαντινό και Χριστιανικό Μουσείο**

Director : Dr Anastasia Lazaridou

Address: 22 Vassilissis Sofias Avenue, Athens 10675, Greece

Telephone: +30 2132139500, +30 2132139572

Email: [bma@byzantinemuseum.gr](mailto:bma@byzantinemuseum.gr)

Website: [www.byzantinemuseum.gr](http://www.byzantinemuseum.gr)

## GREECE

### Athens

## Hellenic Motor Museum

---

The Hellenic Motor Museum is located within a multipurpose commercial building with a metal domed roof and double and triple height exhibition spaces. Time Spiral, a free permanent exhibition which tells the story of the wheel from 300BC in 72 exhibits, provides visitors with an introduction that starts them on their journey from street level to the third floor. The Museum sets out the story of the evolution of the car industry between 1895 and 1996, displaying more than 120 cars. A vast public plaza on the ground floor provides visitors with fountains and plants, seats and playground, a café and shop.

Entirely privately funded, the Hellenic Motor Museum emerged from the racing passion of its founder Theodore Caragionis, a real estate developer who started his unique collection of antique, veteran, vintage, racing, rally, Formula One and prototype model cars in 1977. The vision of the complex is based on a belief that commercial and leisure developments can have a thematic and cultural beating heart at their core, which helps attract visitors and contributes to the tourism economy.



### Information

**Ελληνικό Μουσείο Αυτοκινήτου**

Director : Ms. Marina Filippoussi

Address: Ioulianou 33-35 , Tritis Septemvriou Street & Patission Avenue, Athens 104 34, Greece

Telephone : +30 210 8816187

Email : [hmm@charagionis.com](mailto:hmm@charagionis.com)

Website : [www.hellenicmotormuseum.gr](http://www.hellenicmotormuseum.gr)

# ITALY

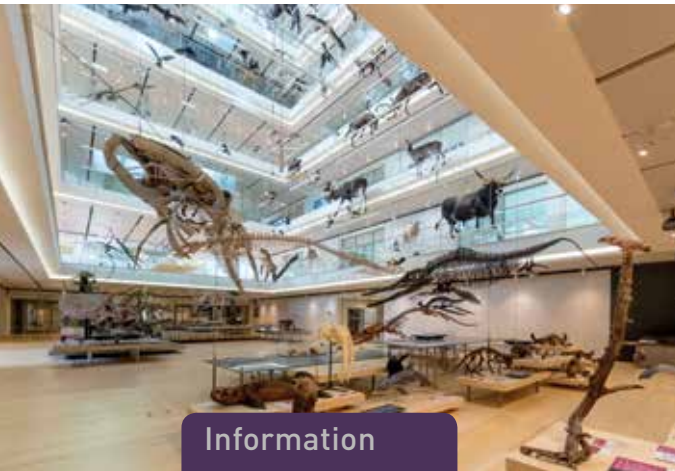
## Trento

### MUSE: Science Museum

---

MUSE is a non-profit, publicly funded science museum which opened in July 2013, as part of the city's development of a new commercial, leisure and residential quarter called Le Albere. Architect Renzo Piano reflects the Museum's mission to promote the need to raise public awareness of the relationship between nature, natural heritage and environmental sustainability through the building's design. Its silhouette recalls the surrounding mountains and the building uses energy saving techniques and renewable energy sources. MUSE emerged from the previous Natural History Museum of Trento, which was

founded in 1921 with an innovative approach towards the relationship between science, nature and society. The interpretation and presentation of themes such as evolution, the environment, innovation, biodiversity and experimentation are explored throughout the galleries. These are located on six floors and include a large glasshouse showcasing 600 square metres of tropical mountain forest, including a waterfall and the lush vegetation found in the mountain ranges of Tanzania. The Museum welcomed 500,000 visitors in one year and includes a multi-sensory area for children called *Maxi Ooh!*



#### Information

**MUSE – Museo delle Scienze**

Director: Michele Lanzinger

Address: Corso del Lavoro e della Scienza 3, 38123 Trento, Italy

Telephone: +39 04 61 27 03 11

Email: [museinfo@muse.it](mailto:museinfo@muse.it)

Website: [www.muse.it](http://www.muse.it)



## THE NETHERLANDS

### The Hague

## National Archives of the Netherlands

---

The Dutch National Archive extends to an overwhelming 125 kilometres of documents, 300,000 maps and 15 million photographs. Custodian of Holland's Declaration of Independence, and regarded as the guardian of Holland's 'national memory', the Archive includes material inscribed on UNESCO's Memory of the World Register. The building has undergone a transformation at the hands of architects Van Eijk and Van der Lubbe to convert its imposing 1970s structure into a series of public spaces demonstrating the institution's commitment to serving as a valuable and accessible public resource.

A clever use of scale, texture and colour, combined with a revised orientation plan, have created a welcoming atmosphere. Information is accessible in numerous formats, with digital guidance materials on particular collection types, and public access to the Archive's database. The collection's enormous range and potential is succinctly introduced by *The Memory Palace*, which presents eleven stories in a range of mixed media, interpreting one thousand years of Dutch history and reinforcing the Archives' intent to present its collections as a dynamic and inspirational resource.

36



### Information

#### **Nationaal Archief**

Director: Irene Gerrits

Address: Prins Willem Alexanderhof 20, Den Haag, The Hague, The Netherlands

Telephone: +31 703 315 400

Email: [info@nationaalarchief.nl](mailto:info@nationaalarchief.nl)

Website: [www.gahetna.nl](http://www.gahetna.nl)

# THE NETHERLANDS

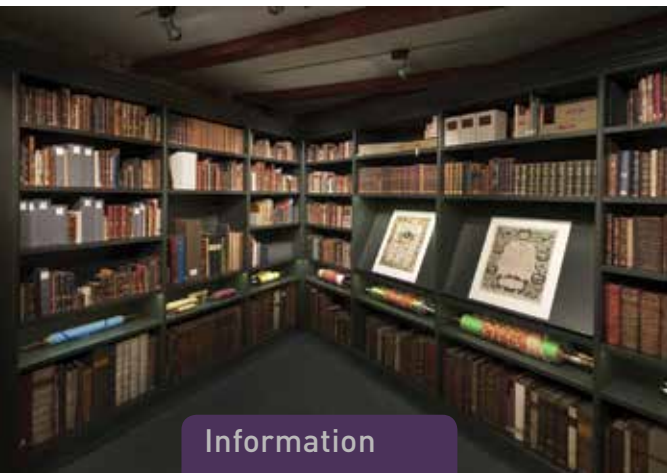
## Amsterdam

### Portuguese Synagogue and Ets Haim Library, Montezinos

The Portuguese Synagogue Complex houses an extraordinarily rich and rare collection of Jewish history and culture. The Synagogue was inaugurated in 1675 and now houses the oldest continuously functioning Jewish Library in the world, the Ets Haim Library, which was founded in 1639. Much of the site's charm lies in its centuries-old traditions. The building's facade has remained unaltered since the 17th century and, though worship continues, there is no heating system and only candlelight. Following two years of careful conservation and redisplay, the world-renowned collections are now kept

to museological standards and presented to the public through changing exhibitions which correspond to the Jewish liturgical calendar.

The Library, inscribed on the UNESCO Memory of the World Register, is available by appointment, whilst the ritual artefacts and furnishings are sensitively displayed. This living museum is a fascinating place to gain an insight into the beliefs and practices of Judaism, and to learn about the culture of Amsterdam's past and present Portuguese Jewish Community.



#### Information

**Portugese Synagoge en bibliotheek Ets Haim**

Director: Mr. J.J. Cahen / Mrs. E.L.M. Bijvoet

Address: Portuguese Synagogue, Mr. Visserplein 3, 1011 RD Amsterdam, The Netherlands

Telephone: +31 (0)20 5 310 310

Email: [info@joodscultureelkwartier.nl](mailto:info@joodscultureelkwartier.nl)

Website: [www.portugesesynagoge.nl](http://www.portugesesynagoge.nl)

# THE NETHERLANDS

## Amsterdam

### Rijksmuseum

The Rijksmuseum's reopening, following a ten-year €370 million transformation, was one of the most hotly anticipated cultural events of the decade. The organisation dubbed the renovation project 'Continuing with Cuypers' as the building was restored to the original architect's 1885 vision of a Gothic and Renaissance-inspired monument to Dutch history and art. The decorative frescoes and terrazzo floors have been reinstated, along with the controversial cycle path which dissects the Museum's east and west wings. The gardens have been redesigned and restored, but many of the boldest interventions are hidden from public view – such as the new ground-source

heating system and cutting-edge climate controls.

The magnificent collection is presented chronologically, maximising the impact of the multi-disciplinary treasures and evoking a powerful sense of the past. Star items, such as Rembrandt's *Night Watch*, are given ample visual space. Each gallery has a distinct style, created through a clever manipulation of light, colour and scale, adding pace and rhythm to the visitor's journey through an otherwise overwhelming collection. The astonishing footfall (2.5 million in 2014) is testament to the project's success and the collection's enduring popularity.

38



#### Information

##### Rijksmuseum

Director: Wim Pijbes

Address: Museumstraat 1, 1071 XX Amsterdam, The Netherlands

Telephone: +31 20 67 47 000

Email: [info@rijksmuseum.nl](mailto:info@rijksmuseum.nl)

Website: [www.rijksmuseum.nl](http://www.rijksmuseum.nl)

# THE NETHERLANDS

## Amsterdam

### Dutch Resistance Museum

The Museum was established by former members of the resistance movement in 1984. The new extension, called the Dutch Resistance Museum Junior, continues its meticulous evidence-based approach, and powerfully conveys themes of persecution, resistance, collaboration and adaptation. Content is presented by Eva, Jan, Henk and Nelly who are eye-witnesses aged 9 to 14 who experienced life in the Netherlands under Nazi occupation. The children's stories are rooted in their locality, and the exhibition staging echoes Dutch vernacular, with house-settings allocated to each child. The children's stories, expressed through animated documentary evidence, are juxtaposed with their filmed oral histories.

All audio-visual content is extremely well designed and executed, including the interactive aeroplane crash site which informs visitors of international wartime experiences. The learning journey deftly takes audiences from detailed personal accounts to a wider international context. By adopting the same design language as the main museum, the Dutch Resistance Museum Junior serves as an ideal training ground for its target audience of 9+ year old children to one day make the transition to the more adult content next door. The Junior Museum gives a fascinating insight into wartime Holland, delivered with immediacy and authenticity.



#### Information

**Verzetsmuseum Amsterdam**

Director: Liesbeth van der Horst

Address: Plantage Kerklaan 61, 1018 CX Amsterdam, The Netherlands

Telephone: + 31 20 620 25 35

Email: [info@verzetsmuseum.org](mailto:info@verzetsmuseum.org)

Website: [www.verzetsmuseum.org](http://www.verzetsmuseum.org)



# NORWAY

Oslo

## The Fram Museum

---

The Fram Museum is a 'site museum' in the sense that it contains two polar ships connected by an underground tunnel which tells the story of the exploration of the North-West passage from the 16th century onwards. The Fram became world famous in 1900 when Fridtjof Nansen, Roald Amundsen, Otto Sverdrup and other explorers travelled to the North and South polar regions.

The Museum was created in 1935, mainly with private money, and is still run today by a non-profit foundation. It is situated on the Bygdøy peninsula, one of Oslo's main tourist attractions, catering to a high concentration

of international visitors: 70% of visitors to the Museum are foreign, which is why all the graphics are in Norse and English, and interpretation in 8 other languages is available on fixed tablets.

The main building was refurbished in 2011, and in 2014 a new building was erected for the polar vessel Gjøa, used to sail the North-West passage for the first time in 1903-1906. The Museum now offers 2,200 square metres of exhibition space, a cinema, a café and a shop.



### Information

#### Frammuseet

Director: Geir O. Kløver

Address: Bygdøynesvn. 36, 0286 Oslo, Norway

Telephone: +4 723 282 950

Email: [elina@frammuseum.no](mailto:elina@frammuseum.no)

Website: [www.frammuseum.no](http://www.frammuseum.no)

# POLAND

Gdansk

## National Maritime Museum

---

The Maritime Culture Centre is one of the seven branches of the National Maritime Museum. It opened in April 2012 in a new building in the old port of Gdansk, now a heritage quarter. The Museum is one of the biggest maritime museums in Europe. The building of the Centre was supported by Iceland, Lichtenstein and Norway under the European Economic Area Financial Mechanism. It was co-financed by the Polish Minister of Culture and the Museum itself. The Centre offers two permanent exhibitions: *People Ships Ports and Boats of the people of the world*. The architecture was adapted to modern, European

standards including interactive, multimedia technologies. An important part of the design and construction requirements was to provide infrastructure for Museum staff so that a wide range of educational activities, such as conservation and underwater archeology workshops, could be delivered, involving visitors in the day to day operations of the Museum.

The Maritime Culture Centre contributes directly to levelling access to culture and education of various social groups, with particular emphasis on people with disabilities.



### Information

**Narodowe Muzeum Morskie w Gdańsku**

Director: Ph.D. Jerzy Litwin

Address: Ołowianka str. 9-13, 80-751 Gdańsk, Poland

Telephone: +48 58 320 33 58

Email: sekretariat@nmm.pl

Website: [www.nmm.pl](http://www.nmm.pl)

# RUSSIA

## Moscow

### The State Historical Museum: Museum of the Patriotic War 1812

---

In 2012 the State Historical Museum in Moscow opened a new permanent exhibition: *Museum of the Patriotic War 1812*. The new space houses an exhibition on two floors and includes both collections – fine and decorative arts, weapons, uniforms, numismatics, documents and memorial objects – and new digital information. The exhibition sets the scene of Europe at the start of the Napoleonic wars: it presents the interlinking of all the royal families of Europe which made Napoleon's domination possible and the flourishing of neoclassicism known as Empire Style. It then leads visitors through the events of 1812 and its aftermath. The Museum is

rich in exhibits about soldiers and officers, partisans and representatives of all classes united by a patriotic impulse against Napoleon's invasion.

The State Historical Museum is one of the Russian Federation's finest museums: centrally located in Red Square, it is well connected with other museums and regularly holds international conferences supported by research and publications. Its exhibition programme covers historical paintings of modern artists, paintings and sculptures by the children of special art schools, and historical reconstructions.



#### Information

Государственный исторический музей

Director: Dr. Alexey Levykin

Address: 109012 Moscow, Red Square, Russia

Telephone: +7 495 692 37 31

Email: [shm@shm.ru](mailto:shm@shm.ru)

Website: [www.shm.ru](http://www.shm.ru)

## RUSSIA

### Perm

## Perm Regional Museum: Museum of Permian Antiquities

The Perm Museum is situated in the former closed city of Perm, some 1,100 km east-northeast of Moscow, at the foot of the Ural mountains, with a catchment area of nearly 1 million people. Conceived during the so called Permian cultural revolution, it opened in 2011 with a sophisticated learning programme spanning a modern exhibition, public events, a publishing agenda and an annual paleontological conference aimed at children.

The new Museum explores the Permian period of geological prehistory (299 - 251 million years ago). Perm all over the world refers to the time when amazing reptiles, helikoprion sharks and other creatures were

found on the single supercontinent Pangaea. Within the local government owned building the Museum presents prehistoric skeletons, finds from excavations, multimedia stations and temporary exhibitions relating to the local oil industry, itself a product of that prehistoric geology.

The Museum's purpose is to raise contemporary interest in global paleontological discoveries in the context of regional history. The museum opened in 2011 with a sophisticated learning programme spanning a modern exhibition, public events, a publishing agenda and an annual paleontological conference aimed at children.



### Information

Музей пермских древностей - Пермский краевой музей

Director: Ms. Olga Iudina

Address: Sibirskaya street, 15. 614000 Perm, Russia

Telephone: +7 342 212 56 57

Email: [museum@permkray.ru](mailto:museum@permkray.ru)

Website: [www.museumperm.ru](http://www.museumperm.ru)



## SERBIA

### Zrenjanin

## National Museum Zrenjanin

---

The National Museum Zrenjanin is situated in a fine building on the main square of a small town, 70km north of Belgrade, in the eastern part of Vojvodina. It has preserved and presented the cultural heritage of the region since it was founded in 1906. After renovations in 2005, which improved security standards, redecorated the interiors and opened up new exhibition spaces, the Museum's permanent exhibition was modernized, winning the award for Best Museum in Serbia in 2006, primarily due to its visitor numbers of over 85,000. Currently, visitors access three exhibition spaces on the ground floor. The permanent

exhibition on the first floor displays fine and applied art and the collections of sporting history, while the second floor deals with archaeology, the natural world, history and ethnography.

The Museum works with children and young people, enjoys a growing profile in the town and increasingly draws on local people's collections for its temporary displays.



### Information

**Narodni Muzej Zrenjanin**

Director: Vidak Vukovic

Address: Suboticeva 1, 23000 Zrenjanin, Serbia

Telephone: +381 648 224 820

Email: [museumzr@open.telekom.rs](mailto:museumzr@open.telekom.rs)

Website: [www.muzejzrenjanin.org.rs](http://www.muzejzrenjanin.org.rs)

## SERBIA

Loznica, Tršić / Loznica

### Vuk Karadžić Cultural Centre

---

The Vuk Karadžić Cultural Centre is located in Tršić, a historic village in the west of Serbia, close to the Bosnian border. It takes its name from the Serbian philologist and linguist Vuk Karadžić (1787-1864) who is considered the most important person of Serbian literature of the 19th century and is the major reformer of the Serbian language that is still spoken today.

The Centre is a 5 hectare open air museum of 32 historic restored vernacular buildings, offering a perfect family day out. *The complex includes the new Museum of Language and Letters, accommodation for visiting students and writers, and the*

outdoor auditorium used for Vuk Karadžić's gatherings where he would propose ways of living and working together. The Writers' House has so far welcomed seven writers in residence from different continents.

The Centre has obtained national recognition, ensuring that the story of the cultural development of the town as a research centre of language, ethnology, history, tradition and folklore can be fully explored with an international focus.



#### Information

**Centar za kulturu "Vuk Karadžić", Ustanova kulture od nacionalnog značaja**

Director: Ms. Dajana Đedović

Address: Landmark village of Tršić / Permanent exhibition of Mića Popović's and Vera Božičković Popović's paintings / Jadar Museum, 1 Pašić Street, Loznica / Landmark village of Tekeriš, / Vuk's House of Culture, 5 Jovan Cvijić Street, Loznica

Telephone: +381 (0)15882718

Email: [ckvkaradzic@ptt.rs](mailto:ckvkaradzic@ptt.rs) / [ckvkaradzic@open.telekom.rs](mailto:ckvkaradzic@open.telekom.rs) / [ckvukkaradzic@gmail.com](mailto:ckvukkaradzic@gmail.com) / [mjptrsic@gmail.com](mailto:mjptrsic@gmail.com)

Website: [www.ckvkaradzic.org.rs](http://www.ckvkaradzic.org.rs)

## SPAIN

León

### Ene.térmica: National Museum of Energy

---

The National Energy Museum, based in León, Spain, examines the historical, cultural, technological and geographical story of energy production. Nestled between the Aquilanos and Medulas mountains, the Museum is situated in the heart of the El Bierzo Valley, an area with a prestigious mining lineage, which served as the centre of mineral extraction for the Roman Empire. With exhibitions located in the preserved industrial complex of the Minero Siderúrgica de Ponferrada, the Museum is developing narratives about energy use and production through a phased redevelopment of the

industrial complex. To date, only one of the three main sites has been completed, *Ene Térmica*, an early 20th century power station which ceased coal-powered electricity generation in 1971. The elegant buildings and their contents have been carefully conserved to tell the multifaceted story of electrification and what it meant for a region formerly known as 'the land of coal'.

46



#### Information

**Ene.térmica : Museo Nacional de la Energía**

Director: Alfonso Peres Osia

Address: Avenida de la Libertad, 46.24404 Ponferrada, Leon, Spain

Telephone: +98 74 00 800

Email: [guias.ene.termica@ciuden.es](mailto:guias.ene.termica@ciuden.es)

Website: [www.enemuseo.org](http://www.enemuseo.org)



## SPAIN

Vilafranca del Penedès

### VINSEUM: Museum of the Wine Cultures of Catalonia

---

VINSEUM celebrates the cultural impact of Catalonia's most prestigious wine-making region. Founded in 1934, it has undergone a recent transformation to conserve the site of the medieval Royal Palace and Chapel of St. Pelegri, reinterpret its collections, and develop a new archival centre and store. Capitalising on its rich architectural context, the Museum presents displays which testify to the 2,700 year-old history of Spanish wine production and consumption. Utilising an impressive collection comprising archaeological finds, historical treasures, contemporary objects and film, the Museum presents a holistic view of wine

heritage, from both local and international perspectives. Its exhibits give a detailed account of the numerous grape varieties and technological developments which have characterised wine and cava production in the Penedès region. The Museum continues to play a central role in promoting the industry, co-hosting the Penedès Wine and Cava Film Festival and celebrating the local producers who have created internationally renowned brands.



#### Information

**VINSEUM, Museu de les Cultures del Vi de Catalunya**

Director: Xavier Fornos

Address: Plaça Jaume I, 1, 08720 Vilafranca del Penedès, Spain

Telephone: +34 93 890 05 82

Email: [vinseum@vinseum.cat](mailto:vinseum@vinseum.cat)

Website: [www.vinseum.cat](http://www.vinseum.cat)

# SWEDEN

## Karlskrona

### Naval Museum

---

Situated in the Karlskrona World Heritage Site, on the coast of the Baltic archipelago, the Naval Museum creatively utilises its geographical and historical context to present a multidisciplinary account of Swedish seafaring. The site was originally founded in 1752 by King Adolf Fredrik to serve as a model testing facility. Now a national museum, it opened its first phase of displays in 1997, exploring topics from 16th century warfare in the Baltic Sea to EU NAVFOR's (the EU Naval Force's) contemporary struggle against piracy on the East African coast.

Last year heralded the development of an ambitious new Submarine Hall, designed to house two Swedish naval treasures: Hajen, the Navy's first submarine, and HMS Neptun, a remnant of the Cold War. Creating an emotional response to the diverse array of artefacts and stories presented is key to the Museum's philosophy. It offers visitors numerous points of intellectual access through powerful experiential displays, deftly contrasting cutting-edge interactives with more traditional exhibition formats to ensure wide appeal.



#### Information

##### **Marinmuseum**

Director: Richard Bauer

Address: Stumholmen, 371 21 Karlskrona, Sweden

Telephone : +46455359300

Email: [registrator@maritima.se](mailto:registrator@maritima.se)

Website: [www.marinmuseum.se](http://www.marinmuseum.se)

# SWITZERLAND

Le Sentier

## Watch Museum, Joux Valley

The Watch Museum has undergone a transformation worthy of its former nomenclature, L'Essor, a French word meaning development, boom or revival. Located in the Joux Valley, a world-renowned centre of mechanical watchmaking prowess, it celebrates the industry's rich history, whilst helping to shape its future.

The exhibits, housed in a 1917 factory building which originally formed part of the prestigious Zenith watchmaking firm, provide an abundance of scholarly information about the art of fine watchmaking. The Museum's approach to interpretation offers visitors an

extremely interactive experience, catering for numerous learning styles with opportunities to meet experienced craftsmen as well as explore the subject through digital platforms. The Museum serves unashamedly as a centre for the promotion of regional watchmaking. It encourages audiences to be brand-aware, increases understanding about the risks of counterfeits, informs visitors about career opportunities, and even trains brand ambassadors and sales staff. Through commendable academic research and a high degree of stakeholder collaboration, the Museum presents a comprehensive account of the culture of Swiss watchmaking.



### Information

**Espace Horloger – Vallée de Joux**

Director: Vincent Jatton

Address: Grand-Rue 2, 1347 Le Sentier, Switzerland

Telephone: +41 21 845 75 45

Email: [info@espacehorloger.ch](mailto:info@espacehorloger.ch)

Website: [www.espacehorloger.ch](http://www.espacehorloger.ch)

## SWITZERLAND

Geneva

### International Red Cross and Red Crescent Museum

---

The International Red Cross and Red Crescent Museum is a model for international engagement. First opened in October 1988, the Museum has reconstructed its identity to reflect the changing nature of global humanitarian action. The charity's ethos has been paramount to the institution's transition. The new exhibition, *The Humanitarian Adventure*, is interpreted through the lens of three culturally diverse architects. Diébédo Francis Kéré from Africa, Gringo Cardia from South America and Shigeru Ban from Japan explore three themes: *Defending Human Dignity*, *Restoring Family Links*, and *Reducing Natural Risks*. The

objective is to elicit an emotional response. Digital technologies have been embraced both to share 'witness' stories – such as the powerful testimonies of aid workers and survivors – and to encourage visitors' active engagement with the charity's overwhelming range of day-to-day activities. Whilst respecting the original architecture, the space has been cleverly manipulated to create powerful visual contrasts between symbols of destruction and creation, and present the poignant collection to maximum effect. The need for collective action in the fight for a fairer world is eloquently conveyed with flair and ingenuity.

50



#### Information

**Musée International de la Croix-Rouge et du Croissant-Rouge**

Director: Roger Mayou

Address: 17 Avenue de la Paix, 1202 Geneva, Switzerland

Telephone: +41 22 748 95 11

Email: [visit@redcrossmuseum.ch](mailto:visit@redcrossmuseum.ch)

Website: [www.redcrossmuseum.ch](http://www.redcrossmuseum.ch)

## SWITZERLAND

### Prangins

## Swiss National Museum, Château de Prangins

The Swiss National Museum, set in the enchanting Château de Prangins overlooking Lake Geneva, presents a multifaceted vision of Swiss history and culture. Established as an attraction in 1998, the former baronial home and 5 hectare estate were recently the subject of a substantial refurbishment project which resulted in the scholarly restoration of the house and gardens.

The site now comprises three new internal and external permanent exhibitions plus a visitor centre, which explore different aspects of the social, political, economic and cultural story of Swiss daily life from

the 19th to the early 20th centuries. The Museum employs its context to good use, interpreting features of the 1730s château – itself a national monument – and attributes of the largest historical kitchen garden in French-speaking Switzerland, to cover diverse topics from the Enlightenment to contemporary photojournalism. A former home of both Voltaire and Napoleon, the Museum houses over six hundred objects in period settings, and serves as a living reminder of centuries past.



### Information

**Musée National Suisse – Château de Prangins**

Director: Nicole Minder

Address: Avenue Guiguer 3, CH – 1197 Prangins, Switzerland

Telephone: +41 58 469 38 90

Email: [info.prangins@snm.admin.ch](mailto:info.prangins@snm.admin.ch)

Website: [www.chateaudeprangins.ch](http://www.chateaudeprangins.ch)



## SWITZERLAND

### Lausanne

## Olympic Museum, Lausanne

The newly refurbished Olympic Museum celebrates the Olympic spirit as defined by Pierre de Coubertin, the man widely acknowledged as the father of the modern Games. He said that the Olympic way of life celebrates effort as a prerequisite to being happy. A former recipient of the European Museum of the Year Award in 1995, the Museum's new displays celebrate the Olympic Movement through three themed permanent exhibitions which explore the Games' heritage, ethos and scope. The interpretive strategy directs visitors to understand the complexity of the international Olympic Movement by finding personal points of access. Visitors are

invited to test their own sporting aptitude from the outset, with a 100 metre running track signalling the site's entrance. The experience is further punctuated by low and high-tech opportunities to measure diet, coordination and stamina against the standards of international athletes. Alternatively, visitors can digitally select their favourite Olympic moments for private reminiscence. The Museum's commitment to strategic international engagement is apparent throughout the new displays and has resulted in a vivid reappraisal of the 10,000-strong multidisciplinary collection.

52



### Information

**Le Musée Olympique**

Director: Francis Gabet

Address: Quay d'Ouchy 1, 1006 Lausanne, Switzerland

Telephone: +41 21 621 65 11

Email: [info.museum@olympic.org](mailto:info.museum@olympic.org)

Website: [www.olympic.org/museum](http://www.olympic.org/museum)



# SWITZERLAND

Airolo

## Sasso San Gottardo

---

The Sasso San Gottardo is a subterranean visitor attraction located in the picturesque San Giameco Pass. The museum conserves the Sasso de Pigna, an operational artillery fort from 1945 to 1999, which exemplifies the controversial Swiss military strategy of 'Redout' - a policy of channelling resources towards protecting Alpine crossings, leaving the heavily populated industrial region of Mittelland comparatively exposed. Sasso San Gottardo's development has finally put an end to national speculation about the existence of the legendary impregnable fortress.

Accessed by the site's underground railway, the caves and tunnels reveal the sleeping

quarters, gun rooms and ammunition depot which once served this ambitious military enterprise. Appropriately, the site's interpretative strategy reveals both its historical past and underpins its original purpose, by exploring a key military concern: effective resource management. Through collaborative working with the science and business communities, the museum has interpreted the themes of *Climate, Security, Energy, Water, and Mobility and Living Space* - in a contemporary and global context. Through thought-provoking mixed-media exhibits, visitors are invited to discover *what lies beneath this mountain, which means so much for Switzerland?*

53



### Information

**Sasso San Gottardo**

Director: Alfred Markwalder

Address: Sasso San Gottardo, Fondazione Sasso San Gottardo, CH 6780 Airolo, Switzerland

Telephone: +41 91 869 15 57

Email: [info@sasso-sangottardo.ch](mailto:info@sasso-sangottardo.ch)

Website: [www.sasso-sangottardo.ch](http://www.sasso-sangottardo.ch)

## TURKEY

### Aydin

## Aydin Archaeology Museum

Known as Antiochia in ancient times, Aydin was famous for its fertile agricultural plains. The town became one of the largest cities of the Aegean, but it was abandoned in the 15th century in favour of a newer city built on lower ground, which was taken over by the Turks. The name Aydin comes from the ruling Turkish Aydinid dynasty.

At the turn of the century, works for the Turkish railway network brought to light fabulous archaeological sites which were later excavated. The finds are displayed both in Istanbul's Archaeological Museum and in the new Aydin Archaeology Museum. The new building was initiated by the Ministry of Culture and Tourism, with

museum staff involved in the interpretative concept. The overall project went out to tender in 2011 and works were completed in 2012. The new Museum boasts an attractive exhibition, organised around eleven units each dealing with an ancient city or excavation. As well as its exhibition, the Museum's conference hall and temporary exhibition hall, playground, café and disabled friendly facilities have turned it into a leisure landmark of the city.



### Information

**Aydin Arkeoloji Müzesi**

Director: Emin YENER

Address: Ilıcabaşı Mahallesi, Müze Bulvarı, No: 4, Efeler, Aydin, Turkey

Telephone: +90 256 225 22 59

Email: aydinmuzesi@kulturturizm.gov.tr

# TURKEY

## Istanbul

### Hisart Live History and Diorama Museum

With an exhibition area of 1,653 square meters spread over six floors, the Museum contains military and ethnographic collections dating from the Roman Empire, Anatolian Seljuk Empire, Ottoman Empire, Turkish War of Independence, First and Second World Wars and the Gulf War. Collected to show the technologic development of military devices, they shed light on the sociological, economic and cultural effects of conflict, as well as the painful aspects of war that we would never want to see.

Founded by a wealthy businessman, the private museum intends to arouse curiosity in visitors, and to increase their interest in

history by piloting an extraordinary narrative approach, free from the 'boring' aspects of history. It claims to be the first of its type, and the only one in the world.

The name of the Museum comes from an acronym based on the words 'history' and 'art'; it is also used by the founder to indicate his own artworks which are part of the collections on display.



#### Information

##### Hisart Canli Tarih Ve Diorama Muzesi

Director : Omer CALSIMSEK / Ibrahim KAYMAK

Address: Hurriyet Mah. Cemil Bengu Cad. No:21 Caglayan 34403 Kagithane, Istanbul, Turkey

Telephone : +90 (212) 296 98 04

Email : [info@hisartmuseum.com](mailto:info@hisartmuseum.com)

Website : [www.hisartmuseum.com](http://www.hisartmuseum.com)

# UKRAINE

Kiev

## Museum of the History of the Toilet

Founded in 2006, the Museum reopened in new premises in 2012. Its displays include original water closets from the 19th century, made of brass or ceramic, as well as replica toilets including Chinese urinals in the form of tigers, and toilet plans and layouts. The Museum boasts the largest collection in Ukraine of toilet souvenir objects and objects such as lighters, cups and toothbrushes, toilet paper holders, made in the shape of toilet bowls.

The Museum is active in promoting environmentally friendly toilet culture and exploring the history of a subject matter that historians and archaeologists are not too familiar with. The Museum's core

message is that, however ordinary, daily toilet rituals and sanitary culture are the pre-requisite for the development of human civilisation. Guided tours introduce visitors to the world wide movement engaged in promoting sanitary conditions of toilets, and in coordinating efforts to improve standards and functionality across the world, introducing modern technologies in the design of hygienic toilets in developing countries.

56



### Information

**Музей Истории Туалета**

Director: Nikolay Bogdanenko

Address: Rybalska Str. №22, Kiev 01011, Ukraine

Telephone: +380 444 993 161

Email: voronova@bestline.com.ua

Website: [www.museumtoilet.com.ua](http://www.museumtoilet.com.ua)



# UKRAINE

Kiev

## Pavlo Tychyna Literary Memorial Museum-Apartment

---

The Memorial Museum-Apartment is dedicated to Pavlo Tychyna, a major poet, public activist and statesman of the Soviet literary establishment, who is a complicated and controversial figure even today. In 2014 the Museum began fundraising to renovate and redesign two exhibition halls on the ground floor in order to turn them into platforms for cultural dialogue and experiment. The Museum has now found its niche in contemporary society as a place to raise awareness of the importance of museums and cultural institutions in building national peace, in a country which is, as we go to print, in a state of war and civil unrest.

Currently, the new rooms are used to deliver additional educational programmes for visitors. An extended community of stakeholders, including young curators, museum staff, and students of Kiev University for Culture and Arts assemble here to focus on their professional training, attend lectures on museological history and museum innovation, and debate the role of museums in contemporary societies.

57



### Information

**Павло Тичуна Буквальна Пам'ятна Музейна Квартира**

Director: Tetyana Sosnovska

Address: Tereshchenkivska 5, office 1, 3, Kiev, Ukraine

Telephone: +380 44 234 43 27

Email: [tychynafm@gmail.com](mailto:tychynafm@gmail.com)

Website: [www.tychyna.com](http://www.tychyna.com)

# UNITED KINGDOM

## Portsmouth

### Mary Rose Museum

---

The Mary Rose was Henry VIII's iconic flagship. It served the powerful Tudor King for 34 years, before sinking in 1545 and spending the next 400 years under the waters of the Channel, between the English coast and the Isle of Wight.

The Museum, on the site of an operating naval base, is an elliptic timber-clad building. It houses the ship and the original collections, previously split between two separate locations, each with particular and demanding conservation needs. The Museum captures the moment when the ship and most of the crew were lost, and excels in engaging visitors with a presentation that speaks to varied

audiences. It opened in 2013 after 50 years of hard work. Originally discovered by volunteer divers, it is thanks to volunteers that the ship was lifted, and the museum still today operates with a large number of volunteers. It has developed innovative outreach programmes combining history and various science disciplines for different target audiences.

In a city struck heavily by economic crisis the Mary Rose Museum contributes highly to restoring the pride of its inhabitants.

58



#### Information

##### **Mary Rose Museum**

Director: Rear Admiral John Lippiett

Address: No 3 Dock, Main Road, HM Naval Base, Portsmouth, P01 3PY, United Kingdom

Telephone: +44 23 9281 2931

Email: [museum@maryrose.org](mailto:museum@maryrose.org)

Website: [www.maryrose.org](http://www.maryrose.org)



# UNITED KINGDOM

## Manchester

### National Football Museum

---

The new National Football Museum, a not for profit organisation which offers free admission to all visitors, opened in Manchester in July 2012. Telling the story of football in England and of the English team in international tournaments, the museum focuses on the play and the players, but also considers football through a wide range of approaches including art, history, sociology and science.

Since relocating from its former site in Preston, 60km north of Manchester, visitor numbers have quadrupled and far exceeded projections. The Museum is for everyone, regardless of age, gender, disability, sexuality, religion or any other factor. It is

not just for those who are interested in, or passionate about, the sport. Through the power of its core subject matter the Museum can particularly focus on engaging those sections of the community that do not usually visit museums and galleries. It explores football, a part of popular culture, a part of daily life. It awakens a heritage reflex with an audience that usually doesn't visit museums.



#### Information

**National Football Museum**

Director: Kevin moore

Address: Urbis Building Cathedral Gardens Manchester M4 3BG, United Kingdom

Telephone : +44 161 605 8200

Email: [info@nationalfootballmuseum.com](mailto:info@nationalfootballmuseum.com)

Website: [www.nationalfootballmuseum.com](http://www.nationalfootballmuseum.com)

# UNITED KINGDOM

## Belfast

### Titanic Belfast

---

Titanic Belfast was developed as a self-sustaining commercial enterprise leading the infrastructural and cultural regeneration of one of Belfast's most deprived districts. It is now Belfast's most famous landmark. It offers visitors two exhibition galleries, two eateries and conference, banqueting and education facilities (including an Ocean Exploration Centre).

Marking 100 years since the completion of the world's most famous liner, the visitor experience opened in March 2012. It stands at the same height as the original ship's structure and offers nine galleries of interpretative experience, charting the story of Belfast at the turn of the 20th century, the

growth of the Harland and Wolff shipyard that built her, and the stories of the people who crafted her, the passengers who sailed on her, and the scientists who found her in 1985. Extensive research and consultation ensures that the exhibition content is rooted in fact and has appeal for all audiences. The experience gives visitors the opportunity to look behind the scenes and marvel at the scale of Belfast's innovation and industry, but it also seeks to dispel some of the myths and legends about the tragedy. Titanic Belfast has welcomed 1.5m visitors in the two years since opening.

60



#### Information

##### **Titanic Belfast**

Director: Tim Husbands

Address: 1 Olympic Way, Queen's Road, Titanic Quarter, Belfast, Northern Ireland, BT3 9EP

Telephone: +44 28 9076 6386

Email: [welcome@titanicbelfast.com](mailto:welcome@titanicbelfast.com)

Website: [www.titanicbelfast.com](http://www.titanicbelfast.com)



## AWARDS 1977-2014

---

### 1977 Strasbourg | France

---

Guest of Honour: Roy Jenkins, President of the Commission of the European Communities

#### European Museum of the Year Award

Ironbridge Gorge Museum Trust, Ironbridge, United Kingdom

#### Specially commended

FN Museum of Industrial Archaeology, Herstal, Belgium

Technical Museum, Helsinki, Finland

Terra Amata Museum, Nice, France

Municipal Museum, Schwäbisch Gmünd, Germany

Historical Museum, Amsterdam, Netherlands

Preus Foto Museum, Horten, Norway

International Museum of Clocks and Watches, La Chaux-de-Fonds, Switzerland

#### Council of Europe Award

Joan Miró Foundation, Barcelona, Spain

### 1978 Aachen | Germany

---

Guest of Honour: Georg Kahn-Ackermann, Secretary-General, Council of Europe

#### European Museum of the Year Award

Schloss Rheydt Municipal Museum, Mönchengladbach, Germany

#### Specially commended

Louisiana: Museum of Modern Art, Humlebaek, Denmark

Centre of Oceanography, Paris, France

Ecomuseum, Le Cresot, France

Bank of Ireland, Dublin, Ireland

International Museum of Ceramics, Faenza, Italy

National Museum of Costume, Lisbon, Portugal

National Travelling Exhibitions, Stockholm, Sweden

Museum of London, London, United Kingdom

Erddig Park, Wrexham, United Kingdom

#### Council of Europe Award

Bryggens Museum, Bergen, Norway

### 1979 Brussels | Belgium

---

Guest of Honour: Her Majesty Queen Fabiola of Belgium

#### European Museum of the Year Award

Museum of the Camargue, Arles, France

#### Specially commended

Michel Thiery Natural History Museum, Ghent, Belgium

National Maritime Museum, Dun Laoghaire, Ireland

Museum of the Jewish Diaspora, Tel-Aviv, Israel

Museum of the Tropics, Amsterdam, Netherlands

Tromsø Museum, Tromsø, Norway

Royal Armoury, Stockholm, Sweden

Pierre Gianadda Foundation, Martigny, Switzerland

Guernsey Museum and Art Gallery, St Peter Port, United Kingdom

#### Council of Europe Award

Municipal Museum, Rüsselsheim, Germany

#### Bank of Ireland Special Exhibitions Award

Archaeological Museum, Thessaloniki, Greece - *Treasures of Macedonia*

#### Specially commended

Crédit Communal de Belgique, Brussels, Belgium - *Brussels: Building and Rebuilding*

Museum of Cultural History, Randers, Denmark - *This is all about us; When the asphalt starts rolling; The vagabonds*

#### Award for Creative Museum Management

Dr Alfred Waldis

Swiss Transport Museum, Lucerne, Switzerland

### 1980 London | England

---

Guest of Honour: Mr Hans de Koster, President of the Parliamentary Assembly, Council of Europe

#### European Museum of the Year Award

Catharine Convent State Museum, Utrecht, Netherlands

#### Specially commended

Sara Hildén Museum, Tampere, Finland

Museum of Art and History, Metz, France

PTT Museum, Riquewihr, France

State Museum of History and Art, Luxembourg

Norwegian Forestry Museum, Elverum, Norway

Museum of Spanish Abstract Art, Cuenca, Spain

Castle Museum, Hallwil, Switzerland

British Museum (Natural History), London, United Kingdom

### **Council of Europe Award**

Monaghan County Museum, Monaghan, Ireland

### **Bank of Ireland Special Exhibitions Award**

Museum of Ethnography and History, Povoá de Varzim, Portugal - *Signs and symbols used by local fishermen*

### **Specially commended**

Viking Ship Museum, Roskilde, Denmark - *Boats of Greenland*  
Children's Workshop, Centre Pompidou, Paris, France - *The sense of touch; Colour*

Gallery of Modern Art, Milan, Italy - *Illustrations of working-class life: Attilio Pusterla and the poor man's eating place*

## 1981 Stockholm | Sweden

---

Guest of Honour: Princess Christina of Sweden

### **European Museum of the Year Award**

Folk Art Museum, Nafplion, Greece

### **Specially commended**

National Museum, Copenhagen, Denmark  
Museum of Prehistory of the Ile-de-France, Nemours, France  
Museum of Gardeners and Vinegrowers, Bamberg, Germany  
Historical Museum, Frankfurt-am-Main, Germany  
The Peggy Guggenheim Collection, Venice, Italy  
Museum of the Valley, Zogno, Italy  
Ethnological Museum, Muro, Mallorca, Spain  
Historical Museum, Olten, Switzerland  
Natural History Museum, Solothurn, Switzerland  
'Hunday', National Farm and Tractor Museum, Stocksfield, United Kingdom

### **Council of Europe Award**

Music Museum, Stockholm, Sweden

### **Bank of Ireland Special Exhibitions Award**

Northern Animal Park, Emmen, Netherlands - *Flowers and colours; Locomotion*

### **Specially commended**

People's Palace Museum, Glasgow, United Kingdom - *Glasgow stained glass*  
Museum of Mankind, London, United Kingdom - *Asante, kingdom of gold*  
Royal Armoury, Stockholm, Sweden - *Royal leisure*

## 1982 Milan | Italy

---

Guest of Honour: Umberto Agnelli

### **European Museum of the Year Award**

Museum of Art and History, Saint-Denis, France

### **Specially commended**

National Museum of Marble, Rance, Belgium  
Archaeological Museum, Kelheim, Germany  
Goulandris Natural History Museum, Kifissia, Greece  
Palazzo Pepoli Campogrande, Bologna, Italy  
Ringve Museum, Trondheim, Norway  
Museum of Crafts and Maritime Culture, Lidköping, Sweden  
Museum of Stained Glass, Romont, Switzerland  
Technorama, Winterthur, Switzerland

### **Council of Europe Award**

Åland Museum, Mariehamn, Finland

### **Bank of Ireland Special Exhibitions Award**

Awarded jointly to

The Yorkshire Museum, York, United Kingdom - *The Vikings in England*

The Guinness Museum, Dublin, Ireland - *Wine of the country: a James's Gape at Guinness and Dublin*

### **Specially commended**

Museum for the Blind, Brussels, Belgium - *The Cathedral*

## 1983 Paris | France

---

Guest of Honour: Mme Bernadette Chirac

### **European Museum of the Year Award**

Regional Museum, Sargans, Switzerland

### **Specially commended**

Museum of Old Technology, Grimbergen, Belgium  
Museum of Contemporary Art, Dunkirk, France  
German Museum of Locks & Fastenings, Velbert, Germany  
Roscrea Heritage Centre, Roscrea, Ireland  
Museum of the Mediterranean, Stockholm, Sweden  
Scottish Agricultural Museum, Edinburgh, United Kingdom  
Ulster Folk & Transport Museum, Belfast, United Kingdom  
Museum of Leeds, Leeds, United Kingdom  
Royal Marines Museum, Southsea, United Kingdom

### **Council of Europe Award**

Joanneum: The Provincial Museum of Styria, Graz, Austria

### **Personal Citations**

Knud Jensen  
Louisiana: Museum of Modern Art, Humlebaek, Denmark - *For his success in arousing the interest of the general public in modern art and in creating an exceptionally sympathetic atmosphere for the purpose*  
Angelos and Niki Goulandris  
The Goulandris Natural History Museum, Kifissia, Greece - *For their outstanding work in creating a centre of public education, scholarship and training of great national and international importance*



## 1984 Enkhuizen | The Netherlands

---

Guest of Honour: Gaetano Adinolfi, Deputy Secretary-General,  
Council of Europe

### European Museum of the Year Award

Zuiderzee Museum, Enkhuizen, Netherlands

### Specially commended

Paul Delvaux Museum, Saint-Idesbald, Belgium

David d'Angers Museum, Angers, France

Museum of Navigation, Regensburg, Germany

Museum of Early Industrialisation, Wuppertal, Germany

Fota House, Carrigtwohill, Ireland

Archaeological Museum, Chieti, Italy

Museum of Farming & Crafts of Calabria, Monterosso Calabro,  
Italy

Evaristo Valle Museum, Gijón, Spain

Museum of the Province of Bohuslän, Uddevalla, Sweden

Museum of the Horse, La Sarraz, Switzerland

Museum of Turkish and Islamic Art, Istanbul, Turkey

The Burrell Collection, Glasgow, United Kingdom

Quarry Bank Mill, Styal, United Kingdom

### Council of Europe Award

Awarded jointly to

Living Museum of the Canal du Centre, Thieu, Belgium

The Boat Museum, Ellesmere Port, United Kingdom

**Note: For administrative reasons, the judging of candidates for the 1985 and 1986 Awards took place in 1986 and the presentations were made in 1987. It was therefore decided to refer to these as the 1987 Awards.**

## 1987 Durham | England

---

Guest of Honour: Dr Richard Hoggart, Chairman, EMYA

### European Museum of the Year Award

Beamish: North of England Open Air Museum, Stanley, United Kingdom

### Specially commended

Museum of Biometeorology, Zwettl, Austria

Waterloo Museum, Waterloo, Belgium

Museum of Prehistory, Carnac, France

Wallpaper Museum, Rixheim, France

Ruhr Museum, Essen, Germany

New State Gallery, Stuttgart, Germany

Museum of Cycladic and Ancient Greek Art, Athens, Greece

Sarakatsani Folklore Museum, Serres, Greece

Municipal Museum, Rende Centro, Italy

Akershus Museum, Strømmen, Norway

National Theatre Museum, Lisbon, Portugal

Forestry Museum, Lycksele, Sweden

Nature Museum, Lucerne, Switzerland

Alimentarium, Vevey, Switzerland

The Ruskin Gallery, Sheffield, United Kingdom

### Council of Europe Award

Neukölln Museum, Berlin, Germany

## 1988 Delphi | Greece

---

Guest of Honour: Dr Richard Hoggart, Chairman, EMYA

### European Museum of the Year Award

Brandts Klædefabrik, Odense, Denmark

### Specially commended

Provincial Museum of Modern Art, Ostend, Belgium

Aine Art Museum, Tornio, Finland

Museum of Aquitaine, Bordeaux, France

Normandy Museum, Caen, France

'Tactical Museum' of the Lighthouse for the Blind in Greece,  
Kallithea, Greece

Sa Dom'e Farra Museum, Quarto S. Elena, Italy

Museum, The Hague, Netherlands

Museum of Medieval Stockholm, Stockholm, Sweden

Maison Tavel, Geneva, Switzerland

Antalya Museum, Antalya, Turkey

Mary Rose Museum, Portsmouth, United Kingdom

### Council of Europe Award

Awarded jointly to

The Bavarian National Museum, Munich, Germany

Museum of the Convent of Descalzas Reales, Madrid, Spain

## 1989 Basel | Switzerland

---

Guest of Honour: Hans-Rudolf Striebel, Regierungsrat des  
Kantons Basel Stadt

### European Museum of the Year Award

Sundsvall Museum, Sundsvall, Sweden

### Specially commended

Ecomuseum of Alsace, Ungersheim, France

Museum of Coaches, Carriages, Carts and Wagons, Heidenheim  
a.d. Brenz, Germany

Municipal Museum, Iserlohn, Germany

International Lace Museum, Nordhalben, Germany

Luigi Pecci Centre for Contemporary Art, Prato, Italy  
National Museum of Roman Art, Mérida, Spain  
The Futures' Museum, Borlänge, Sweden  
Bergslagen Ecomuseum, Falun, Sweden  
Swiss Museum of Games, La-Tour-de-Peilz, Switzerland  
Dulwich Picture Gallery, London, United Kingdom  
Brewing and Brewery Museum, Ljubljana, Yugoslavia  
**Council of Europe Award**  
Jewish Historical Museum, Amsterdam, Netherlands

## 1990 Bologna | Italy

---

Guest of Honour: Superintendent of Cultural Affairs, Province of Emilia Romagna

### **European Museum of the Year Award**

Ecomuseum of the Fournies-Trélon Region, Fournies, France

### **Specially commended**

Heureka - The Finnish Science Centre, Vantaa, Finland  
German Cookery Book Museum, Dortmund, Germany  
Municipal Museum, Gütersloh, Germany  
Røros Museum, Røros, Norway  
Marionette Museum, Stockholm, Sweden  
National Museum of Photography, Film and Television, Bradford, United Kingdom  
National Waterways Museum, Gloucester, United Kingdom

### **Council of Europe Award**

Manuel da Maia Museum of Water, Lisbon, Portugal

### **Personal Citation**

Graziano Campanini  
Municipal Art Gallery, Pieve di Cento, Italy -  
*In public recognition of his outstanding achievement in stimulating public awareness of the need for conservation of the local heritage*

## 1991 Helsinki | Finland

---

Guest of Honour: Dr Richard Hoggart, Chairman, EMYA

### **European Museum of the Year Award**

The Leventis Municipal Museum of Nicosia, Cyprus

### **Specially commended**

Moorland and Peat Museum, Heidenreichstein, Austria  
Dairy Museum, Saukkola, Finland  
Museum of Automata, Souillac, France  
The Old Synagogue, Essen, Germany  
Coastal Museum, Gratangsbotn, Norway  
Agricultural Museum of Entre Douro e Miño, Vila do Conde, Portugal

House of Wheat and Bread, Echallens, Switzerland  
Natural History Museum, Schaffhausen, Switzerland  
Museum of Science and Industry, Manchester, United Kingdom  
**Council of Europe Award**  
German Salt Museum, Lüneburg, Germany

## 1992 Leiden | The Netherlands

---

Guest of Honour: Mrs Hedy d'Ancona, Dutch Minister of Welfare, Health and Cultural Affairs

### **European Museum of the Year Award**

State Museum of Technology and Work, Mannheim, Germany

### **Specially commended**

National Museum of Asian, African and American Cultures, Prague, Czech Republic  
Océanopolis, Brest, France  
Museum of Cretan Ethnology, Vori, Greece  
Vasa Museum, Stockholm, Sweden  
Inveraray Jail, Inveraray, United Kingdom

### **Council of Europe Award**

Argenta Marsh Museum, Argenta, Italy

## 1993 Guimaraes | Portugal

---

Guest of Honour: Dr Pedro Santana Lopes, Secretary of State for Culture

### **European Museum of the Year Award**

Alta Museum, Alta, Norway

### **Specially commended**

State Archaeological Museum, Konstanz, Germany  
King Stephen Museum, Székesfehérvár, Hungary  
Museum of the Olive, Imperia Oneglia, Italy  
Municipal Museum, Loures, Portugal  
Basel Paper Mill, Basel, Switzerland  
Manx Museum, Douglas, Isle of Man, United Kingdom

### **Council of Europe Award**

Awarded jointly to  
Kobarid Museum, Kobarid, Slovenia  
Archaeological Museum of Istanbul, Istanbul, Turkey

### **Personal Citation**

Dr Corneliu Bucur  
Museum of Folk Civilisation in Romania, Sibiu, Romania -  
*For maintaining and developing his museum in the face of all possible political discouragement*

## 1994 Belfast | Northern Ireland

---

Guest of Honour: Councillor Reginald Empey, Lord Mayor of Belfast

### **European Museum of the Year Award**

National Museum, Copenhagen, Denmark

### **Specially commended**

Historical Record of the Great War, Péronne, France  
Museum of Modern Art, Frankfurt-am-Main, Germany  
Museonder, Hoenderloo, Netherlands  
Cotroceni National Museum, Bucharest, Romania  
The Tower Museum, Derry, United Kingdom  
Museum of Farnham, Farnham, United Kingdom

### **Council of Europe Award**

Provincial Museum of Lapland, Rovaniemi, Finland

## 1995 Västerås | Sweden

---

Guest of Honour: Mrs Lena Hjelm-Wallén, Swedish Minister of Foreign Affairs

### **European Museum of the Year Award**

The Olympic Museum, Lausanne, Switzerland

### **Specially commended**

Museum of Traditional Local Culture, Spittal/Drau, Austria  
Lapidarium of the National Museum, Prague, Czech Republic  
City Museum, Helsinki, Finland  
Westphalian Industrial Museum, Waltrop, Germany  
Morandi Museum, Bologna, Italy  
County Museum of Västernorrland, Härnösand, Sweden  
Lindwurm Museum, Stein am Rhein, Switzerland  
Museum of Underwater Archaeology, Bodrum, Turkey  
City Art Gallery, Southampton, United Kingdom

### **Council of Europe Award**

House of the History of the Federal Republic of Germany, Bonn, Germany

### **Personal Citation**

Gabriele Mazzotta

Antonio Mazzotta Foundation, Milan, Italy -

*For his work in developing an exhibition centre of exceptional quality, which is likely to have a profound and far-reaching effect on the museum situation in Italy; for his successful efforts to further international co-operation in the museum field; and for the consistently high standard of his publications programme.*

## 1996 Barcelona | Spain

---

Guest of Honour: Her Majesty Queen Fabiola of Belgium

### **European Museum of the Year Award**

Museum of the Romanian Peasant, Bucharest, Romania

### **Specially commended**

Museum of the Práchenké Region, Písek, Czech Republic  
Lusto - Finnish Forest Museum, Punkaharju, Finland  
Countryside Museum, Usson-en-Forez, France  
German Safety at Work Exhibition, Dortmund, Germany  
Turaida Museum, Turaida, Latvia  
Groningen Museum, Groningen, Netherlands  
Chiado Museum, Lisbon, Portugal  
Gijón Heritage Project, Gijón, Spain  
Glassworks Museum, Hergiswil, Switzerland  
Museum of Liverpool Life, Liverpool, United Kingdom

### **Council of Europe Award**

MAK-Austrian Museum of Applied Arts, Vienna, Austria

### **Micheletti Award**

German Safety at Work Exhibition, Dortmund, Germany

### **Personal Citation**

Mr Rahmi M. Koç

Rahmi M. Koç Industrial Museum, Istanbul, Turkey -

*In recognition of his enterprise and pioneering spirit in establishing an industrial and technical museum which will be an inspiration and encouragement to countries which have hitherto lacked such institutions.*

## 1997 Lausanne | Switzerland

---

Guest of Honour: Her Majesty Queen Fabiola of Belgium

### **European Museum of the Year Award**

Museum of Anatolian Civilisations, Ankara, Turkey

### **Specially commended**

Aboa Vetus & Ars Nova, Turku, Finland  
Historical Museum, Bielefeld, Germany  
Lower Bavarian Museum of Prehistory, Landau, Germany  
Historical and Ethnological Museum of Greek-Cappadocian Civilisations, Nea Karvali, Greece  
Bondefanten Museum, Maastricht, Netherlands  
Old Royal Observatory, London, United Kingdom

### **Council of Europe Award**

Children's Museum, Tropical Museum, Amsterdam, Netherlands

### **Micheletti Award**

Municipal Museum, Idrija, Slovenia

## 1998 Samos | Greece

---

Guest of Honour: Mr Ioannis Mahairidis, General Secretary, Ministry of the Aegean

### **European Museum of the Year Award**

The Conservation Centre, NMGM Liverpool, United Kingdom

### **Specially commended**

Zeppelin Museum, Friedrichshafen, Germany

Neanderthal Museum, Mettmann, Germany

Heinz Nixdorf MuseumsForum, Paderborn, Germany

Hungarian Natural History Museum, Budapest, Hungary

Museum of the History of the City of Luxembourg, Luxembourg

Michel Giacometti Museum of Work, Setúbal, Portugal

Vladimir & Suzdal Museum of History, Art and Architecture,

Vladimir, Russia

Buckinghamshire County Museum, Aylesbury, United Kingdom

### **Council of Europe Award**

The Museum Centre, Krasnoyarsk, Russia

### **Micheletti Award**

Ecomuseum Bergslagen, Smedjebacken, Sweden

## 1999 Ljubljana | Slovenia

---

Guest of Honour: Ms Viktorija Potoknik, Mayor of Ljubljana

### **European Museum of the Year Award**

French Museum of Playing Cards, Issy-les-Moulineaux, France

### **Specially commended**

Otto Lilienthal Museum, Anklam, Germany

Amedeo Lia Municipal Museum, La Spezia, Italy

Museum De Stadhof, Zwolle, Netherlands

Murska Sobota Regional Museum, Murska Sobota, Slovenia

Vitlycke Museum, Tanumshede, Sweden

Museum of Prehistory, Zug, Switzerland

Gallery of Modern Art, Glasgow, United Kingdom

Maritime Museum of Jersey, United Kingdom

### **Council of Europe Award**

Palace of Fine Arts, Lille, France

### **Micheletti Award**

Verdant Works, Dundee, United Kingdom

## 2000 Bonn | Germany

---

Guest of Honour: Her Majesty Queen Fabiola of Belgium

### **European Museum of the Year Award**

Guggenheim Museum, Bilbao, Spain

### **Specially commended**

Siida – Sámi Museum & Northern Lapland Nature Centre, Inari, Finland

National Socialist Documentation Centre of the City of Cologne, Germany

Museum of Reconstruction, Hammerfest, Norway

Visionarium, Santa Maria da Feira, Portugal

Museum Estate of L. Tolstoy, Yasnaya Polyana, Russia

Silver Museum, Arjeplog, Sweden

Museum of Scotland, Edinburgh, United Kingdom

### **Council of Europe Award**

In Flanders Fields Museum, Ieper/Ypres, Belgium

### **Micheletti Award**

Industrion, Kerkrade, Netherlands

## 2001 Pisa | Italy

---

Guest of Honour: Her Majesty Queen Fabiola of Belgium

### **European Museum of the Year Award**

National Railway Museum, York, United Kingdom

### **Specially commended**

Farmhouse Museum, Bielefeld, Germany

Museum of the City and the District, Monsummano Terme, Italy

Zaans Museum, Koog aan de Zaan, Netherlands

Coal Mining Museum of Slovenia, Velenje, Slovenia

Härjedalen Mountain Museum, Funäsdalen, Sweden

National Museum of Photography, Film & Television, Bradford,

United Kingdom

### **Council of Europe Award**

Theatre Museum, Helsinki, Finland

### **Micheletti Award**

English Mill's Cork Museum, Silves, Portugal

## 2002 City of Luxembourg

---

Guest of Honour: Her Majesty Queen Fabiola of Belgium

### **European Museum of the Year Award**

The Chester Beatty Library, Dublin, Ireland

### **Specially commended**

National Museum of History, Sofia, Bulgaria

City Museum – Street Museum, Helsinki, Finland

Levi Strauss Museum 'Jeans & Kult', Buttenheim, Germany

Waterford Treasures Museum, Waterford, Ireland

Permafrost Museum, Igarka, Russia

Museum of Kyburg Castle, Kyburg, Switzerland

STEAM: Museum of the Great Western Railway, Swindon, United Kingdom

### **Council of Europe Award**

Buddenbrook House, Lübeck, Germany

### **Micheletti Award**

Ceramics Museum of Sacavém, Portugal

## 2003 Copenhagen | Denmark

---

Guest of Honour: Mr Martin Geertsen, Mayor of the Committee of Culture, Libraries and Sport of Copenhagen

### **European Museum of the Year Award**

Victoria & Albert Museum – British Galleries, London, United Kingdom

### **Specially commended**

Kierikki Stone Age Centre, Yli-Ii, Finland

The Goulandris Natural History Museum – Gaia Centre for Environmental Research and Education, Kifissia, Greece

Danube Museum – The Hungarian Museum of Water Administration, Esztergom, Hungary

National Museum of Antiquities, Leiden, Netherlands

CosmoCaixa, Alcobendas (Madrid), Spain

Imperial War Museum – Holocaust Exhibition, London, United Kingdom

### **Council of Europe Award**

Laténium – Park and Museum of Archaeology, Hauterive, Switzerland

### **Micheletti Award**

Industrial Museum of Clockmaking, Villingen-Schwenningen, Germany

## 2004 Kifissia | Greece

---

Guest of Honour: Mr Dimitris Avramopoulos, Minister of Tourism in Greece, former Mayor of Athens

### **European Museum of the Year Award**

MARQ, Archaeological Museum of the Province of Alicante, Spain

### **Specially commended**

La Piscine – André Diligent Museum of Art and Industry, Roubaix, France

House of Terror, Budapest, Hungary

Imperial War Museum North, Manchester, United Kingdom

### **Council of Europe Award**

Trakya University Sultan Bayazid II Kulliye Health Care Museum, Edirne, Turkey

### **Micheletti Award**

Herring Era Museum, Siglufjörður, Iceland

## 2005 Brussels | Belgium

---

Guest of Honour: Her Majesty Queen Fabiola of Belgium

### **European Museum of the Year Award**

The National Heritage Museum, Arnhem, Netherlands

### **Specially commended**

Saxony Museum of Industry, Chemnitz, Germany

Fishing Museum, Palamos, Spain

Mölnadal Museum, Mölnadal, Sweden

### **Council of Europe Award**

Museum of Byzantine Culture, Thessaloniki, Greece

### **Micheletti Award**

City of Science, Naples, Italy

## 2006 Lisbon | Portugal

---

Guest of Honour: Her Majesty Queen Fabiola of Belgium

### **European Museum of the Year Award**

CosmoCaixa Barcelona, Spain

### **Specially commended**

inatura - The Natural History Adventure Experience in Dornbirn, Austria

ARoS Denmark, Aarhus, Denmark

National Museum of Iceland, Reykjavik, Iceland

### **Council of Europe Award**

Churchill Museum, London, United Kingdom

### **Micheletti Award**

Tom Tits Experiment, Södertälje, Sweden

## 2007 Alicante | Spain

---

Guest of Honour: Her Majesty Queen Fabiola of Belgium

### **European Museum of the Year Award**

German Emigration Center, Bremerhaven, Germany

### **Specially commended**

Museum of the Bresse Region, Saint-Cyr-sur-Menthon, France

The Dolhuys: Museum of Psychiatry, Haarlem, Netherlands

The Railway Museum, Utrecht, Netherlands

Paul Klee Centre, Bern, Switzerland

### **Council of Europe Award**

International Museum of the Reformation, Geneva, Switzerland

### **Micheletti Award**

Brunel's ss Great Britain, Bristol, United Kingdom



## 2008 Dublin | Ireland

---

Guest of Honour: Her Majesty Queen Fabiola of Belgium

### **European Museum of the Year Award**

Art Museum of Estonia - Kumu Art Museum, Tallinn, Estonia

### **Specially commended**

Catharijneconvent Museum, Utrecht, Netherlands

Museum of Almeria, Almeria, Spain

Wimbledon Lawn Tennis Museum, London, United Kingdom

### **Council of Europe Award**

Svalbard Museum, Longyearbyen, Norway

### **Micheletti Award**

University Science Museum, Coimbra, Portugal

## 2009 Bursa | Turkey

---

Guest of Honour: Mr Recep Altepe, Mayor of Bursa

### **European Museum of the Year Award**

Salzburg Museum, Salzburg, Austria

### **Specially commended**

Archaeological Centre of Almoína, Valencia, Spain

Museum of Life Stories, Speicher, Switzerland

Museum of Modern Art, Istanbul, Turkey

### **Council of Europe Award**

Zeeuws Museum, Middelburg, Netherlands

### **Micheletti Award**

Museum of the Jaeren Region, Naerbø, Norway

## 2010 Tampere | Finland

---

Guest of Honour: Mr Timo P. Nieminen, Mayor, City of Tampere

### **European Museum of the Year Award**

Ozeaneum, Stralsund, Germany

### **Specially commended**

Museum of Natural Sciences, Brussels, Belgium

The Science Gallery, Dublin, Ireland

Jewish Historical Museum, Amsterdam, Netherlands

### **Council of Europe Prize**

Portimão Museum, Portimao, Portugal

### **Micheletti Award**

Agbar Water Museum, Cornellà de Llobregat, Spain

### **Kenneth Hudson Award**

Museum of Contraception and Abortion, Vienna, Austria

## 2011 Bremerhaven | Germany

---

Guest of Honour: Bernd Neumann, State Commissioner for Culture and the Media, Germany

### **European Museum of the Year Award**

Gallo-Roman Museum, Tongeren, Belgium

### **Specially commended**

The British Music Experience, London, United Kingdom

Douro Museum, Peso da Regua, Portugal

Museum of the Artist and Story-Teller Stepan Pisakhov, Arkhangelsk, Russia

Museo Memoria de Andalucía, Granada, Spain

Schiller National Museum, Marbach, Germany

Tampere 1918 – Museum of the Finnish Civil War, Tampere, Finland

### **Kenneth Hudson Award**

Museum of Broken Relationships, Zagreb, Croatia

### **Sillette Prize**

Watersnoodmuseum, Owerkerk, Netherlands

## 2012 Penafiel | Portugal

---

Guest of Honour: Alberto Santos, Mayor of Penafiel, and Francisco José Viegas, Secretary of State for Culture, Portugal

### **European Museum of the Year Award**

Museo de Madinat al-Zahra, Cordoba, Spain

### **Council of Europe Museum Prize**

Rautenstrauch Joest Museum, World Cultures, Cologne, Germany

### **Specially commended**

Audax Textielmuseum, Tilburg, The Netherlands

The Museum of a Disappeared Taste – Kolomna Pastilla, Kolomna, Russia

The Museum of Prijepolje, Serbia

The People's History Museum in Manchester, UK

### **Kenneth Hudson Award**

The Glasnevin Museum in Dublin, Ireland

### **Sillette Prize**

The International Puppet Museum Centre, Tolosa, Spain

## 2013 Tongeren | Belgium

---

Guest of Honour: Joke Schauvliege, Flemish Minister of Environment, Nature and Culture and Igor Philtjens, Vice Governor of the Province of Limburg

### **European Museum of the Year Award**

Riverside Museum: Scotland's Museum of Transport, Glasgow, UK

### **Council of Europe Museum Prize**

Museum of Liverpool, United Kingdom

### **Specially commended**

Gobustan National Historical Artistic Preserve, Garadakh district, Azerbaijan

Art Museum Riga Bourse, Riga, Latvia

The National Maritime Museum, Amsterdam, Netherlands

San Telmo Museum, San Telmo, Spain

### **Kenneth Hudson Award**

Batalha's Municipal Community Museum, Damão e Diu – Batalha, Portugal

### **Silletto Prize**

MAS Museum aan de Stroom, Antwerp, Belgium

## 2014 Tallinn | Estonia

---

Guest of Honour: Urve Tiidus, Estonian Minister of Culture, Meelis Pai, adviser to Tallinn Mayor

### **European Museum of the Year Award**

The Museum of Innocence, Istanbul, Turkey

### **Council of Europe Museum Prize**

The Baksı Museum, Bayburt, Turkey

### **Specially commended**

Lennusadam, Estonian Maritime Museum, Tallinn, Estonia

Bildmuseet, Umeå, Sweden

Museo Nacional de Ciencia y Tecnología, A Coruña, Spain

Museo Occidens / Catedral de Pamplona, Spain

Kazerne Dossin – Memorial, Museum and Documentation Centre on Holocaust and Human Rights, Mechelen, Belgium

Flossenbürg Concentration Camp Memorial, Germany

### **Kenneth Hudson Award**

Žanis Lipke Memorial, Riga, Latvia

### **Silletto Prize**

The Saurer Museum, Arbon, Switzerland

## European Museum Forum

---

European Museum Forum is a Charitable Company Limited by guarantee, registered in England and Wales, registration no 07243034, charity no 1136790, registered office World Museum Liverpool, William Brown Street, Liverpool L3 8EN

### **EMF Office**

Rue Palestro 22  
Paris, France

Françoise McClafferty  
EMF Trust Secretary  
National Museum Liverpool, Liverpool, United Kingdom

### **Administrator**

Matthew Guichard  
ICOM, Paris, France

### **Office address**

European Museum Forum  
c/o ICOM – International Council of Museums  
22 rue Palestro  
75002 Paris  
France  
tel +33 1 47 34 81 58  
fax +33 1 43 06 05 54  
emf@icom.museum

### **EMF website**

[www.europeanmuseumforum.org](http://www.europeanmuseumforum.org)

### **Council of Europe website**

<http://assembly.coe.int/Museum/PrixMuseeCE>

**The EMF archive** of printed documentation is at the

Institut für Museumsforschung (SMB-PK)

In der Halde 1  
D-14195 Berlin  
Germany

tel +49 30 8301460  
fax +49 30 8301504

e-mail [m.hagedorn@smb.spk-berlin.de](mailto:m.hagedorn@smb.spk-berlin.de)

### **European Museum of the Year Award. The Candidates 2015**

Published by: European Museum Forum  
Editor: Benedetta Tiana, BT Consultancy & Nigel Chew, UK  
National Museums Liverpool  
Graphic Layout: Nikola Drempetić Hrčić, Croatia

www.meyvaert.be

since

**simply the best  
tailor-made  
display cases**

**1826**



**MEYVAERT**

Meyvaert is one of the world's leading manufacturers of museum display cases. We completed more than 1000 projects around the globe and continue to earn international recognition. We partner with museum directors, curators, conservation staff, architects, exhibition designers and building contractors to provide innovative museum displays and exhibition solutions. A solid expertise and technological foundation focused on customers needs, from lighting & conservation, to mechanical opening and electronic security systems. We provide display, security and climate-control solutions for museums and private collections worldwide. Our outstanding craftsmanship can be found in prestigious museums all over the world.

Dok Noord 3 9000 Ghent Belgium T +32 9 225 54 27 F +32 9 224 36 11 info@meyvaert.be www.meyvaert.be